

Datasheet for ABIN1537620
anti-ERN1 antibody (C-Term)[Go to Product page](#)

1 Image

Overview

Quantity:	400 µL
Target:	ERN1
Binding Specificity:	AA 828-857, C-Term
Reactivity:	Human
Host:	Rabbit
Clonality:	Polyclonal
Conjugate:	This ERN1 antibody is un-conjugated
Application:	Western Blotting (WB)

Product Details

Immunogen:	This ERN1 antibody is generated from rabbits immunized with a KLH conjugated synthetic peptide between 828-857 amino acids from the C-terminal region of human ERN1.
Clone:	RB16565
Isotype:	Ig Fraction
Purification:	This antibody is purified through a protein A column, followed by peptide affinity purification.

Target Details

Target:	ERN1
Alternative Name:	ERN1 (ERN1 Products)
Background:	The protein encoded by this gene is the ER to nucleus signalling 1 protein, a human homologue

Target Details

of the yeast Ire1 gene product. This protein possesses intrinsic kinase activity and an endoribonuclease activity and it is important in altering gene expression as a response to endoplasmic reticulum-based stress signals.

Molecular Weight: 109735

Gene ID: 2081

NCBI Accession: [NP_001424](#)

UniProt: [O75460](#)

Pathways: [ER-Nucleus Signaling](#), [Unfolded Protein Response](#)

Application Details

Application Notes: WB: 1:1000

Restrictions: For Research Use only

Handling

Format: Liquid

Buffer: Purified polyclonal antibody supplied in PBS with 0.09 % (W/V) sodium azide.

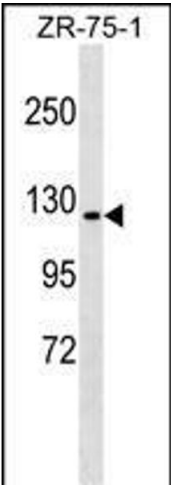
Preservative: Sodium azide

Precaution of Use: This product contains Sodium azide: a POISONOUS AND HAZARDOUS SUBSTANCE which should be handled by trained staff only.

Storage: 4 °C,-20 °C

Storage Comment: ERN1 Antibody (C-term) can be refrigerated at 2-8 °C for up to 6 months. For long term storage, keep at -20 °C.

Expiry Date: 6 months



Western Blotting

Image 1. ERN1 Antibody (C-term) (ABIN1537620 and ABIN2849317) western blot analysis in ZR-75-1 cell line lysates (35 µg/lane). This demonstrates the ERN1 antibody detected the ERN1 protein (arrow).