



[Go to Product page](#)

Datasheet for ABIN1537624
anti-LARP1B antibody (C-Term)

1 Image

Overview

Quantity:	400 µL
Target:	LARP1B
Binding Specificity:	AA 832-859, C-Term
Reactivity:	Human
Host:	Rabbit
Clonality:	Polyclonal
Conjugate:	This LARP1B antibody is un-conjugated
Application:	Western Blotting (WB)

Product Details

Immunogen:	This LARP1B antibody is generated from rabbits immunized with a KLH conjugated synthetic peptide between 832-859 amino acids from the C-terminal region of human LARP1B.
Clone:	RB37703
Isotype:	Ig Fraction
Purification:	This antibody is purified through a protein A column, followed by peptide affinity purification.

Target Details

Target:	LARP1B
Alternative Name:	LARP1B (LARP1B Products)
Background:	This gene encodes a protein containing domains found in the La related protein of Drosophila

Target Details

melanogaster. La motif-containing proteins are thought to be RNA-binding proteins, where the La motif and adjacent amino acids fold into an RNA recognition motif. The La motif is also found in proteins unrelated to the La protein. Alternative splicing has been observed at this locus and three variants, encoding distinct isoforms, are described. Additional splice variation has been identified but the full-length nature of these transcripts has not been determined.

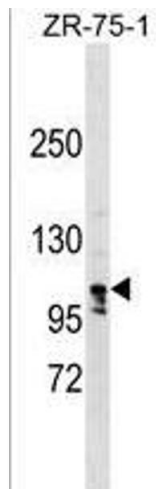
Molecular Weight:	105322
Gene ID:	55132
NCBI Accession:	NP_001265533 , NP_060548 , NP_115615 , NP_835144
UniProt:	Q659C4

Application Details

Application Notes:	WB: 1:1000
Restrictions:	For Research Use only

Handling

Format:	Liquid
Buffer:	Purified polyclonal antibody supplied in PBS with 0.09 % (W/V) sodium azide.
Preservative:	Sodium azide
Precaution of Use:	This product contains Sodium azide: a POISONOUS AND HAZARDOUS SUBSTANCE which should be handled by trained staff only.
Storage:	4 °C,-20 °C
Storage Comment:	LARP1B Antibody (C-term) can be refrigerated at 2-8 °C for up to 6 months. For long term storage, keep at -20 °C.
Expiry Date:	6 months



Western Blotting

Image 1. LARP1B Antibody (C-term) (ABIN1537624 and ABIN2849266) western blot analysis in ZR-75-1 cell line lysates (35 µg/lane). This demonstrates the LARP1B antibody detected the LARP1B protein (arrow).