

Datasheet for ABIN1537626
anti-DMGDH antibody (C-Term)[Go to Product page](#)

1 Image

Overview

Quantity:	400 µL
Target:	DMGDH
Binding Specificity:	AA 836-864, C-Term
Reactivity:	Human
Host:	Rabbit
Clonality:	Polyclonal
Conjugate:	This DMGDH antibody is un-conjugated
Application:	Western Blotting (WB)

Product Details

Immunogen:	This DMGDH antibody is generated from rabbits immunized with a KLH conjugated synthetic peptide between 836-864 amino acids from the C-terminal region of human DMGDH.
Clone:	RB23867
Isotype:	Ig Fraction
Purification:	This antibody is purified through a protein A column, followed by peptide affinity purification.

Target Details

Target:	DMGDH
Alternative Name:	DMGDH (DMGDH Products)
Background:	This gene encodes an enzyme involved in the catabolism of choline, catalyzing the oxidative

Target Details

demethylation of dimethylglycine to form sarcosine. The enzyme is found as a monomer in the mitochondrial matrix, and uses flavin adenine dinucleotide and folate as cofactors. Mutation in this gene causes dimethylglycine dehydrogenase deficiency, characterized by a fishlike body odor, chronic muscle fatigue, and elevated levels of the muscle form of creatine kinase in serum.

Molecular Weight: 96811

Gene ID: 29958

NCBI Accession: [NP_037523](#)

UniProt: [Q9UI17](#)

Application Details

Application Notes: WB: 1:1000

Restrictions: For Research Use only

Handling

Format: Liquid

Buffer: Purified polyclonal antibody supplied in PBS with 0.09 % (W/V) sodium azide.

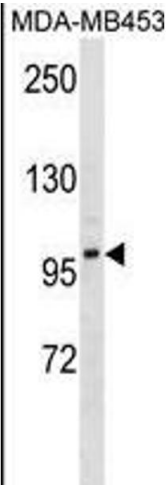
Preservative: Sodium azide

Precaution of Use: This product contains Sodium azide: a POISONOUS AND HAZARDOUS SUBSTANCE which should be handled by trained staff only.

Storage: 4 °C,-20 °C

Storage Comment: DMGDH Antibody (C-term) can be refrigerated at 2-8 °C for up to 6 months. For long term storage, keep at -20 °C.

Expiry Date: 6 months



Western Blotting

Image 1. DMGDH Antibody (C-term) (ABIN1537626 and ABIN2849506) western blot analysis in MDA-M cell line lysates (35 µg/lane). This demonstrates the DMGDH antibody detected the DMGDH protein (arrow).