



[Go to Product page](#)

Datasheet for ABIN1537631  
**anti-PATE1 antibody (C-Term)**

1 Image

### Overview

Quantity:	400 µL
Target:	PATE1
Binding Specificity:	AA 87-114, C-Term
Reactivity:	Human
Host:	Rabbit
Clonality:	Polyclonal
Conjugate:	This PATE1 antibody is un-conjugated
Application:	Western Blotting (WB)

### Product Details

Immunogen:	This PATE1 antibody is generated from rabbits immunized with a KLH conjugated synthetic peptide between 87-114 amino acids from the C-terminal region of human PATE1.
Clone:	RB37959
Isotype:	Ig Fraction
Purification:	This antibody is purified through a protein A column, followed by peptide affinity purification.

### Target Details

Target:	PATE1
Alternative Name:	PATE1 ( <a href="#">PATE1 Products</a> )
Background:	The function of this protein is unknown.

## Target Details

Molecular Weight:	14271
Gene ID:	160065
NCBI Accession:	<a href="#">NP_612151</a>
UniProt:	<a href="#">Q8WXA2</a>

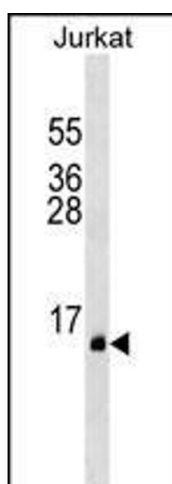
## Application Details

Application Notes:	WB: 1:1000
Restrictions:	For Research Use only

## Handling

Format:	Liquid
Buffer:	Purified polyclonal antibody supplied in PBS with 0.09 % (W/V) sodium azide.
Preservative:	Sodium azide
Precaution of Use:	This product contains Sodium azide: a POISONOUS AND HAZARDOUS SUBSTANCE which should be handled by trained staff only.
Storage:	4 °C, -20 °C
Storage Comment:	PATE1 Antibody (C-term) can be refrigerated at 2-8 °C for up to 6 months. For long term storage, keep at -20 °C.
Expiry Date:	6 months

## Images



### Western Blotting

**Image 1.** TE1 Antibody (C-term) (ABIN1537631 and ABIN2849313) western blot analysis in Jurkat cell line lysates (35 µg/lane). This demonstrates the TE1 antibody detected the TE1 protein (arrow).