

Datasheet for ABIN1537632  
**anti-UBA6 antibody (C-Term)**



[Go to Product page](#)

1 Image

### Overview

Quantity:	400 µL
Target:	UBA6
Binding Specificity:	AA 861-889, C-Term
Reactivity:	Human
Host:	Rabbit
Clonality:	Polyclonal
Conjugate:	This UBA6 antibody is un-conjugated
Application:	Western Blotting (WB)

### Product Details

Immunogen:	This UBA6 antibody is generated from rabbits immunized with a KLH conjugated synthetic peptide between 861-889 amino acids from the C-terminal region of human UBA6.
Clone:	RB30386
Isotype:	Ig Fraction
Predicted Reactivity:	M
Purification:	This antibody is purified through a protein A column, followed by peptide affinity purification.

### Target Details

Target:	UBA6
Alternative Name:	UBA6 ( <a href="#">UBA6 Products</a> )

## Target Details

---

**Background:** Modification of proteins with ubiquitin (UBB, MIM 191339) or ubiquitin-like proteins controls many signaling networks and requires a ubiquitin-activating enzyme (E1), a ubiquitin conjugating enzyme (E2), and a ubiquitin protein ligase (E3). UBE1L2 is an E1 enzyme that initiates the activation and conjugation of ubiquitin-like proteins (Jin et al., 2007 [PubMed 17597759]).

**Molecular Weight:** 117970

**Gene ID:** 55236

**NCBI Accession:** [NP\\_060697](#)

**UniProt:** [A0AVT1](#)

## Application Details

---

**Application Notes:** WB: 1:1000

**Restrictions:** For Research Use only

## Handling

---

**Format:** Liquid

**Buffer:** Purified polyclonal antibody supplied in PBS with 0.09 % (W/V) sodium azide.

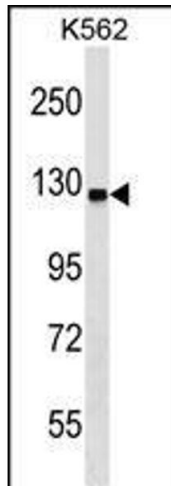
**Preservative:** Sodium azide

**Precaution of Use:** This product contains Sodium azide: a POISONOUS AND HAZARDOUS SUBSTANCE which should be handled by trained staff only.

**Storage:** 4 °C,-20 °C

**Storage Comment:** UBA6 Antibody (C-term) can be refrigerated at 2-8 °C for up to 6 months. For long term storage, keep at -20 °C.

**Expiry Date:** 6 months



### Western Blotting

**Image 1.** UBA6 Antibody (C-term) (ABIN1537632 and ABIN2848559) western blot analysis in K562 cell line lysates (35 µg/lane). This demonstrates the UBA6 antibody detected the UBA6 protein (arrow).