

Datasheet for ABIN1537633

**anti-Cbl Proto-Oncogene B, E3 Ubiquitin Protein Ligase (CBLB)
(AA 862-889), (C-Term) antibody**[Go to Product page](#)**1** Image

Overview

Quantity:	400 µL
Target:	Cbl Proto-Oncogene B, E3 Ubiquitin Protein Ligase (CBLB)
Binding Specificity:	AA 862-889, C-Term
Reactivity:	Mouse
Host:	Rabbit
Clonality:	Polyclonal
Conjugate:	Un-conjugated
Application:	Western Blotting (WB)

Product Details

Immunogen:	This Mouse Cblb antibody is generated from rabbits immunized with a KLH conjugated synthetic peptide between 862-889 amino acids from the C-terminal region of mouse Cblb.
Clone:	RB39998
Isotype:	Ig Fraction
Purification:	This antibody is purified through a protein A column, followed by peptide affinity purification.

Target Details

Target:	Cbl Proto-Oncogene B, E3 Ubiquitin Protein Ligase (CBLB)
Alternative Name:	Cblb (CBLB Products)
Background:	E3 ubiquitin-protein ligase which accepts ubiquitin from specific E2 ubiquitin-conjugating

Target Details

enzymes, and transfers it to substrates, generally promoting their degradation by the proteasome. Negatively regulates TCR (T-cell receptor), BCR (B-cell receptor) and FCER1 (high affinity immunoglobulin epsilon receptor) signal transduction pathways. In naive T-cells, inhibits VAV1 activation upon TCR engagement and imposes a requirement for CD28 costimulation for proliferation and IL-2 production. Also acts by promoting PIK3R1/p85 ubiquitination, which impairs its recruitment to the TCR and subsequent activation. In activated T-cells, inhibits PLCG1 activation and calcium mobilization upon restimulation and promotes anergy. In B-cells, acts by ubiquitinating SYK and promoting its proteasomal degradation. May also be involved in EGFR ubiquitination and internalization.

Molecular Weight: 109092

Gene ID: 208650

NCBI Accession: [NP_001028410](#)

UniProt: [Q3TTA7](#)

Application Details

Application Notes: WB: 1:1000

Restrictions: For Research Use only

Handling

Format: Liquid

Buffer: Purified polyclonal antibody supplied in PBS with 0.09 % (W/V) sodium azide.

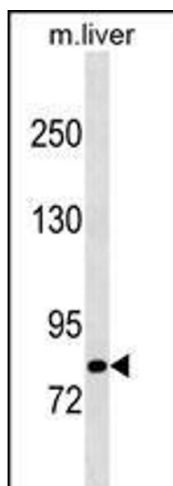
Preservative: Sodium azide

Precaution of Use: This product contains Sodium azide: a POISONOUS AND HAZARDOUS SUBSTANCE which should be handled by trained staff only.

Storage: 4 °C, -20 °C

Storage Comment: Mouse Cblb Antibody (C-term) can be refrigerated at 2-8 °C for up to 6 months. For long term storage, keep at -20 °C.

Expiry Date: 6 months



Western Blotting

Image 1. Mouse Cblb Antibody (C-term) (ABIN1537633 and ABIN2838232) western blot analysis in mouse liver tissue lysates (35 µg/lane). This demonstrates the Cblb antibody detected the Cblb protein (arrow).