



[Go to Product page](#)

Datasheet for ABIN1537634  
**anti-KIF5B antibody (C-Term)**

1 Image

Overview

|                      |                                      |
|----------------------|--------------------------------------|
| Quantity:            | 400 µL                               |
| Target:              | KIF5B                                |
| Binding Specificity: | AA 867-895, C-Term                   |
| Reactivity:          | Human, Mouse                         |
| Host:                | Rabbit                               |
| Clonality:           | Polyclonal                           |
| Conjugate:           | This KIF5B antibody is un-conjugated |
| Application:         | Western Blotting (WB)                |

Product Details

|                       |  |
|-----------------------|--|
| Immunogen:            | This KIF5B antibody is generated from rabbits immunized with a KLH conjugated synthetic peptide between 867-895 amino acids from the C-terminal region of human KIF5B. |
| Clone:                | RB33668  |
| Isotype:              | Ig Fraction  |
| Predicted Reactivity: | Rat  |
| Purification:         | This antibody is purified through a protein A column, followed by peptide affinity purification.   |

Target Details

|                   |  |
|-------------------|--|
| Target:           | KIF5B                                    |
| Alternative Name: | KIF5B ( <a href="#">KIF5B Products</a> ) |

## Target Details

---

|                   |   |
|-------------------|---|
| Background:       | Microtubule-dependent motor required for normal distribution of mitochondria and lysosomes (By similarity). |
| Molecular Weight: | 109685  |
| Gene ID:          | 3799  |
| NCBI Accession:   | <a href="#">NP_004512</a>   |
| UniProt:          | <a href="#">P33176</a>  |
| Pathways:         | <a href="#">Peptide Hormone Metabolism</a> , <a href="#">Ribonucleoprotein Complex Subunit Organization</a> |

## Application Details

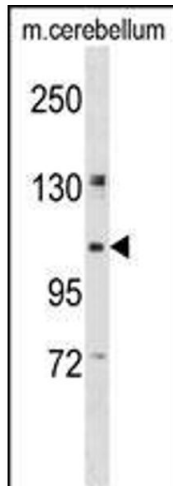
---

|                    |                       |
|--------------------|-----------------------|
| Application Notes: | WB: 1:1000            |
| Restrictions:      | For Research Use only |

## Handling

---

|                    |  |
|--------------------|--|
| Format:            | Liquid   |
| Buffer:            | Purified polyclonal antibody supplied in PBS with 0.09 % (W/V) sodium azide.   |
| Preservative:      | Sodium azide   |
| Precaution of Use: | This product contains Sodium azide: a POISONOUS AND HAZARDOUS SUBSTANCE which should be handled by trained staff only. |
| Storage:           | 4 °C, -20 °C   |
| Storage Comment:   | KIF5B Antibody (C-term) can be refrigerated at 2-8 °C for up to 6 months. For long term storage, keep at -20 °C.       |
| Expiry Date:       | 6 months   |



#### Western Blotting

**Image 1.** KIF5B Antibody (C-term) (ABIN1537634 and ABIN2848570) western blot analysis in mouse cerebellum tissue lysates (35 µg/lane). This demonstrates the KIF5B antibody detected the KIF5B protein (arrow).