

Datasheet for ABIN1537643
anti-RFX1 antibody (C-Term)

3 Images

[Go to Product page](#)

Overview

Quantity:	400 µL
Target:	RFX1
Binding Specificity:	AA 896-925, C-Term
Reactivity:	Human
Host:	Rabbit
Clonality:	Polyclonal
Conjugate:	This RFX1 antibody is un-conjugated
Application:	Western Blotting (WB), Immunofluorescence (IF)

Product Details

Immunogen:	This RFX1 antibody is generated from rabbits immunized with a KLH conjugated synthetic peptide between 896-925 amino acids from the C-terminal region of human RFX1.
Clone:	RB30347
Isotype:	Ig Fraction
Predicted Reactivity:	M
Purification:	This antibody is purified through a protein A column, followed by peptide affinity purification.

Target Details

Target:	RFX1
Alternative Name:	RFX1 (RFX1 Products)

Target Details

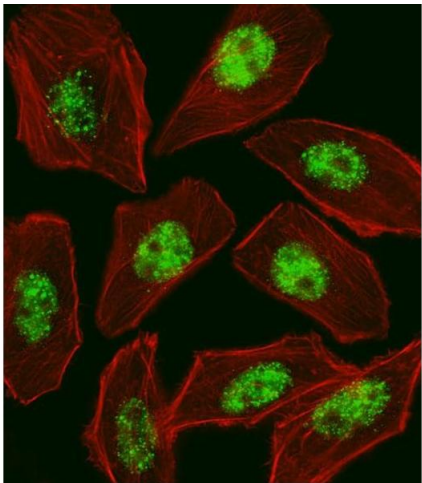
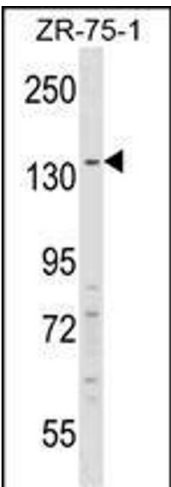
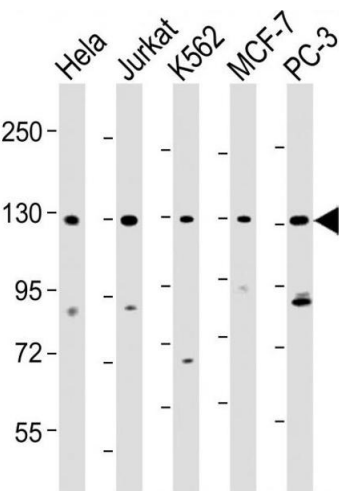
Background:	This gene is a member of the regulatory factor X gene family, which encodes transcription factors that contain a highly-conserved winged helix DNA binding domain. The protein encoded by this gene is structurally related to regulatory factors X2, X3, X4, and X5. It is a transcriptional activator that can bind DNA as a monomer or as a heterodimer with RFX family members X2, X3, and X5, but not with X4. This protein binds to the X-boxes of MHC class II genes and is essential for their expression. Also, it can bind to an inverted repeat that is required for expression of hepatitis B virus genes.
Molecular Weight:	104758
Gene ID:	5989
NCBI Accession:	NP_002909
UniProt:	P22670
Pathways:	Human Leukocyte Antigen (HLA) in Adaptive Immune Response

Application Details

Application Notes:	IF: 1:10~50. WB: 1:1000. WB: 1:2000
Restrictions:	For Research Use only

Handling

Format:	Liquid
Buffer:	Purified polyclonal antibody supplied in PBS with 0.09 % (W/V) sodium azide.
Preservative:	Sodium azide
Precaution of Use:	This product contains Sodium azide: a POISONOUS AND HAZARDOUS SUBSTANCE which should be handled by trained staff only.
Storage:	4 °C,-20 °C
Storage Comment:	RFX1 Antibody (C-term) can be refrigerated at 2-8 °C for up to 6 months. For long term storage, keep at -20 °C.
Expiry Date:	6 months



Western Blotting

Image 1. All lanes : Anti-RFX1 Antibody (C-term) at 1:2000 dilution Lane 1: HeLa whole cell lysate Lane 2: Jurkat whole cell lysate Lane 3: K562 whole cell lysate Lane 4: MCF-7 whole cell lysate Lane 5: PC-3 whole cell lysate Lysates/proteins at 20 µg per lane. Secondary Goat Anti-Rabbit IgG, (H+L), Peroxidase conjugated at 1/10000 dilution. Predicted band size : 105 kDa Blocking/Dilution buffer: 5 % NFDM/TBST.

Western Blotting

Image 2. RFX1 Antibody (C-term) (ABIN1537643 and ABIN2848461) western blot analysis in ZR-75-1 cell line lysates (35 µg/lane). This demonstrates the RFX1 antibody detected the RFX1 protein (arrow).

Immunofluorescence

Image 3. Fluorescent image of cell stained with RFX1 Antibody (C-term) (ABIN1537643 and ABIN2848461). cells were fixed with 4 % PFA (20 min), permeabilized with Triton X-100 (0.1 %, 10 min), then incubated with RFX1 primary antibody (1:25, 1 h at 37 °C). For secondary antibody, Alexa Fluor® 488 conjugated donkey anti-rabbit antibody (green) was used (1:400, 50 min at 37 °C). Cytoplasmic actin was counterstained with Alexa Fluor® 555 (red) conjugated Phalloidin (7 units/mL, 1 h at 37 °C). RFX1 immunoreactivity is localized to Nucleus significantly.