

Datasheet for ABIN1537648
anti-CLIP2 antibody (C-Term)[Go to Product page](#)

1 Image

Overview

Quantity:	400 µL
Target:	CLIP2
Binding Specificity:	AA 911-940, C-Term
Reactivity:	Human, Mouse
Host:	Rabbit
Clonality:	Polyclonal
Conjugate:	This CLIP2 antibody is un-conjugated
Application:	Western Blotting (WB)

Product Details

Immunogen:	This CYLN2 antibody is generated from rabbits immunized with a KLH conjugated synthetic peptide between 911-940 amino acids from the C-terminal region of human CYLN2.
Clone:	RB20933
Isotype:	Ig Fraction
Predicted Reactivity:	Rat
Purification:	This antibody is purified through a protein A column, followed by peptide affinity purification.

Target Details

Target:	CLIP2
Alternative Name:	CYLN2 (CLIP2 Products)

Target Details

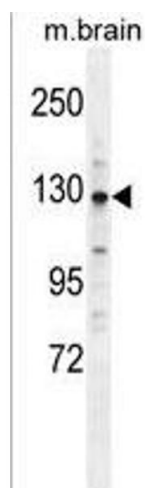
Background:	The protein encoded by this gene belongs to the family of cytoplasmic linker proteins, which have been proposed to mediate the interaction between specific membranous organelles and microtubules. This protein was found to associate with both microtubules and an organelle called the dendritic lamellar body. This gene is hemizygously deleted in Williams syndrome, a multisystem developmental disorder caused by the deletion of contiguous genes at 7q11.23. Alternative splicing of this gene generates 2 transcript variants.
Molecular Weight:	115837
Gene ID:	7461
NCBI Accession:	NP_003379 , NP_115797
UniProt:	Q9UDT6
Pathways:	Microtubule Dynamics

Application Details

Application Notes:	WB: 1:1000
Restrictions:	For Research Use only

Handling

Format:	Liquid
Buffer:	Purified polyclonal antibody supplied in PBS with 0.09 % (W/V) sodium azide.
Preservative:	Sodium azide
Precaution of Use:	This product contains Sodium azide: a POISONOUS AND HAZARDOUS SUBSTANCE which should be handled by trained staff only.
Storage:	4 °C,-20 °C
Storage Comment:	CYLN2 Antibody (C-term) can be refrigerated at 2-8 °C for up to 6 months. For long term storage, keep at -20 °C.
Expiry Date:	6 months



Western Blotting

Image 1. CYLN2 Antibody (C-term) (ABIN1537648 and ABIN2849319) western blot analysis in mouse brain tissue lysates (35 µg/lane). This demonstrates the CYLN2 antibody detected the CYLN2 protein (arrow).