



[Go to Product page](#)

Datasheet for ABIN1537649

anti-PHF20L1 antibody (C-Term)

1 Image

Overview

Quantity:	400 µL
Target:	PHF20L1
Binding Specificity:	AA 912-940, C-Term
Reactivity:	Human
Host:	Rabbit
Clonality:	Polyclonal
Conjugate:	This PHF20L1 antibody is un-conjugated
Application:	Western Blotting (WB)

Product Details

Immunogen:	This PHF20L1 antibody is generated from rabbits immunized with a KLH conjugated synthetic peptide between 912-940 amino acids from the C-terminal region of human PHF20L1.
Clone:	RB37745
Isotype:	Ig Fraction
Purification:	This antibody is purified through a protein A column, followed by peptide affinity purification.

Target Details

Target:	PHF20L1
Alternative Name:	PHF20L1 (PHF20L1 Products)
Background:	PHF20L1 (PHD finger protein 20-like 1) is a 554 amino acid protein that contains two tudor

Target Details

domains and is expressed as multiple alternatively spliced isoforms.

Molecular Weight: 115010

Gene ID: 51105

NCBI Accession: [NP_057102](#), [NP_940915](#)

UniProt: [A8MW92](#)

Application Details

Application Notes: WB: 1:1000

Restrictions: For Research Use only

Handling

Format: Liquid

Buffer: Purified polyclonal antibody supplied in PBS with 0.09 % (W/V) sodium azide.

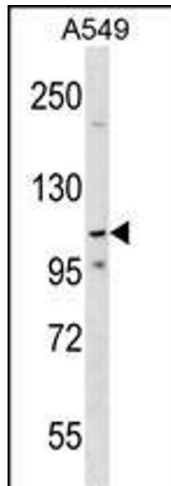
Preservative: Sodium azide

Precaution of Use: This product contains Sodium azide: a POISONOUS AND HAZARDOUS SUBSTANCE which should be handled by trained staff only.

Storage: 4 °C, -20 °C

Storage Comment: PHF20L1 Antibody (C-term) can be refrigerated at 2-8 °C for up to 6 months. For long term storage, keep at -20 °C.

Expiry Date: 6 months



Western Blotting

Image 1. PHF20L1 Antibody (C-term) (ABIN1537649 and ABIN2849282) western blot analysis in A549 cell line lysates (35 µg/lane). This demonstrates the PHF20L1 antibody detected the PHF20L1 protein (arrow).