

Datasheet for ABIN1537659  
**anti-SIPA1 antibody (C-Term)**[Go to Product page](#)

## 1 Image

## Overview

Quantity:	400 µL
Target:	SIPA1
Binding Specificity:	AA 942-970, C-Term
Reactivity:	Human
Host:	Rabbit
Clonality:	Polyclonal
Conjugate:	This SIPA1 antibody is un-conjugated
Application:	Western Blotting (WB)

## Product Details

Immunogen:	This SIPA1 antibody is generated from rabbits immunized with a KLH conjugated synthetic peptide between 942-970 amino acids from the C-terminal region of human SIPA1.
Clone:	RB36710
Isotype:	Ig Fraction
Purification:	This antibody is purified through a protein A column, followed by peptide affinity purification.

## Target Details

Target:	SIPA1
Alternative Name:	SIPA1 ( <a href="#">SIPA1 Products</a> )
Background:	The product of this gene is a mitogen induced GTPase activating protein (GAP). It exhibits a

## Target Details

specific GAP activity for Ras-related regulatory proteins Rap1 and Rap2, but not for Ran or other small GTPases. This protein may also hamper mitogen-induced cell cycle progression when abnormally or prematurely expressed. It is localized to the perinuclear region. Two alternatively spliced variants encoding the same isoform have been characterized to date.

Molecular Weight: 112149

Gene ID: 6494

NCBI Accession: [NP\\_006738](#)

UniProt: [Q96FS4](#)

Pathways: [Response to Water Deprivation](#)

## Application Details

Application Notes: WB: 1:1000

Restrictions: For Research Use only

## Handling

Format: Liquid

Buffer: Purified polyclonal antibody supplied in PBS with 0.09 % (W/V) sodium azide.

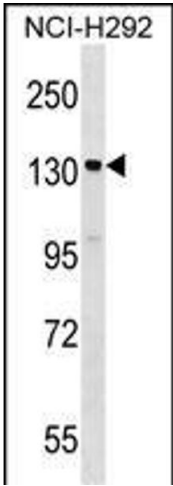
Preservative: Sodium azide

Precaution of Use: This product contains Sodium azide: a POISONOUS AND HAZARDOUS SUBSTANCE which should be handled by trained staff only.

Storage: 4 °C,-20 °C

Storage Comment: SIPA1 Antibody (C-term) can be refrigerated at 2-8 °C for up to 6 months. For long term storage, keep at -20 °C.

Expiry Date: 6 months



Western Blotting

**Image 1.** SI Antibody (C-term) (ABIN1537659 and ABIN2848642) western blot analysis in NCI- cell line lysates (35 µg/lane). This demonstrates the SI antibody detected the SI protein (arrow).