

Datasheet for ABIN1537673  
**anti-CRYbA4 antibody (C-Term)**[Go to Product page](#)

## 1 Image

## Overview

Quantity:	400 µL
Target:	CRYbA4
Binding Specificity:	AA 98-127, C-Term
Reactivity:	Human, Mouse
Host:	Rabbit
Clonality:	Polyclonal
Conjugate:	This CRYbA4 antibody is un-conjugated
Application:	Western Blotting (WB)

## Product Details

Immunogen:	This CRYBA4 antibody is generated from rabbits immunized with a KLH conjugated synthetic peptide between 98-127 amino acids from the C-terminal region of human CRYBA4.
Clone:	RB32446
Isotype:	Ig Fraction
Purification:	This antibody is purified through a protein A column, followed by peptide affinity purification.

## Target Details

Target:	CRYbA4
Alternative Name:	CRYBA4 ( <a href="#">CRYbA4 Products</a> )
Background:	Crystallins are separated into two classes: taxon-specific, or enzyme, and ubiquitous. The latter

## Target Details

class constitutes the major proteins of vertebrate eye lens and maintains the transparency and refractive index of the lens. Since lens central fiber cells lose their nuclei during development, these crystallins are made and then retained throughout life, making them extremely stable proteins. Mammalian lens crystallins are divided into alpha, beta, and gamma families, beta and gamma crystallins are also considered as a superfamily. Alpha and beta families are further divided into acidic and basic groups. Seven protein regions exist in crystallins: four homologous motifs, a connecting peptide, and N- and C-terminal extensions. Beta-crystallins, the most heterogeneous, differ by the presence of the C-terminal extension (present in the basic group, none in the acidic group). Beta-crystallins form aggregates of different sizes and are able to self-associate to form dimers or to form heterodimers with other beta-crystallins. This gene, a beta acidic group member, is part of a gene cluster with beta-B1, beta-B2, and beta-B3. [provided by RefSeq].

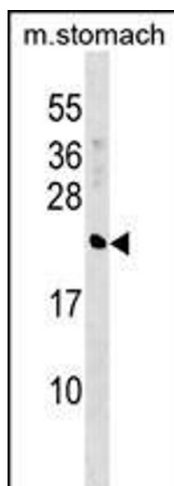
Molecular Weight:	22374
Gene ID:	1413
NCBI Accession:	<a href="#">NP_001877</a>
UniProt:	<a href="#">P53673</a>

## Application Details

Application Notes:	WB: 1:1000
Restrictions:	For Research Use only

## Handling

Format:	Liquid
Buffer:	Purified polyclonal antibody supplied in PBS with 0.09 % (W/V) sodium azide.
Preservative:	Sodium azide
Precaution of Use:	This product contains Sodium azide: a POISONOUS AND HAZARDOUS SUBSTANCE which should be handled by trained staff only.
Storage:	4 °C, -20 °C
Storage Comment:	CRYBA4 Antibody (C-term) can be refrigerated at 2-8 °C for up to 6 months. For long term storage, keep at -20 °C.
Expiry Date:	6 months



#### Western Blotting

**Image 1.** CRYBA4 Antibody (C-term) (ABIN1537673 and ABIN2848563) western blot analysis in mouse stomach tissue lysates (35 µg/lane). This demonstrates the CRYBA4 antibody detected the CRYBA4 protein (arrow).