



[Go to Product page](#)

Datasheet for ABIN1537680
anti-NOTCH3 antibody (C-Term)

2 Images

Overview

Quantity:	400 µL
Target:	NOTCH3
Binding Specificity:	AA 2291-2321, C-Term
Reactivity:	Human
Host:	Mouse
Clonality:	Monoclonal
Conjugate:	This NOTCH3 antibody is un-conjugated
Application:	Western Blotting (WB)

Product Details

Immunogen:	This NOTCH3 antibody is generated from mice immunized with a KLH conjugated synthetic peptide between 2291-2321 amino acids from the C-terminal region of human NOTCH3.
Clone:	487CT6-9-2
Isotype:	IgG1
Purification:	This antibody is purified through a protein G column, followed by dialysis against PBS.

Target Details

Target:	NOTCH3
Alternative Name:	NOTCH3 (NOTCH3 Products)
Background:	This gene encodes the third discovered human homologue of the Drosophila melanogaster

Target Details

type I membrane protein notch. In *Drosophila*, notch interaction with its cell-bound ligands (delta, serrate) establishes an intercellular signalling pathway that plays a key role in neural development. Homologues of the notch-ligands have also been identified in human, but precise interactions between these ligands and the human notch homologues remains to be determined. Mutations in NOTCH3 have been identified as the underlying cause of cerebral autosomal dominant arteriopathy with subcortical infarcts and leukoencephalopathy (CADASIL). [provided by RefSeq].

Molecular Weight: 243631

Gene ID: 4854

NCBI Accession: [NP_000426](#)

UniProt: [Q9UM47](#)

Pathways: [Notch Signaling](#)

Application Details

Application Notes: WB: 1:2000. WB: 1:100~250

Restrictions: For Research Use only

Handling

Format: Liquid

Buffer: Purified monoclonal antibody supplied in PBS with 0.09 % (W/V) sodium azide.

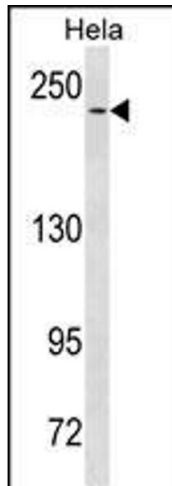
Preservative: Sodium azide

Precaution of Use: This product contains Sodium azide: a POISONOUS AND HAZARDOUS SUBSTANCE which should be handled by trained staff only.

Storage: 4 °C,-20 °C

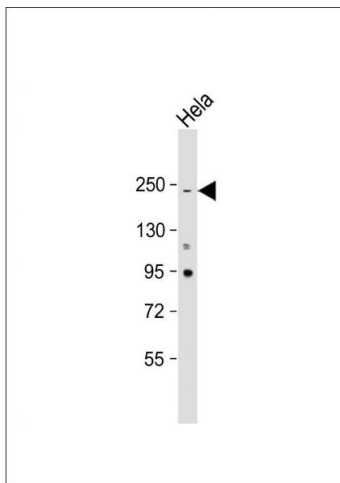
Storage Comment: NOTCH3 Antibody (C-term Q2306) can be refrigerated at 2-8 °C for up to 6 months. For long term storage, keep at -20 °C.

Expiry Date: 6 months



Western Blotting

Image 1. NOTCH3 Antibody (ABIN1537680 and ABIN2843860) western blot analysis in HeLa cell line lysates (35 µg/lane). This demonstrates the NOTCH3 antibody detected the NOTCH3 protein (arrow).



Western Blotting

Image 2. Anti-NOTCH3 Antibody at 1:2000 dilution + HeLa whole cell lysate Lysates/proteins at 20 µg per lane. Secondary Goat Anti-mouse IgG, (H+L), Peroxidase conjugated at 1/10000 dilution. Predicted band size : 250 kDa Blocking/Dilution buffer: 5 % NFDM/TBST.