

Datasheet for ABIN1537685
anti-TLE1 antibody (AA 199-228)[Go to Product page](#)

1 Image

Overview

Quantity:	400 µL
Target:	TLE1
Binding Specificity:	AA 199-228
Reactivity:	Human
Host:	Mouse
Clonality:	Monoclonal
Conjugate:	This TLE1 antibody is un-conjugated
Application:	Western Blotting (WB)

Product Details

Immunogen:	This TLE1 antibody is generated from mice immunized with a KLH conjugated synthetic peptide between 199-228 amino acids from the Central region of human TLE1.
Clone:	381CT18-5-1
Isotype:	IgG1
Purification:	This antibody is purified through a protein G column, followed by dialysis against PBS.

Target Details

Target:	TLE1
Alternative Name:	TLE1 (TLE1 Products)
Background:	Transcriptional corepressor that binds to a number of transcription factors. Inhibits NF-kappa-

Target Details

B-regulated gene expression. Inhibits the transcriptional activation mediated by FOXA2, and by CTNNB1 and TCF family members in Wnt signaling. The effects of full-length TLE family members may be modulated by association with dominant-negative AES. Unusual function as coactivator for ESRRG.

Molecular Weight: 83201

Gene ID: 7088

NCBI Accession: [NP_005068](#)

UniProt: [Q04724](#)

Pathways: [WNT Signaling](#), [SARS-CoV-2 Protein Interactome](#)

Application Details

Application Notes: WB: 1:100~250

Restrictions: For Research Use only

Handling

Format: Liquid

Buffer: Purified monoclonal antibody supplied in PBS with 0.09 % (W/V) sodium azide.

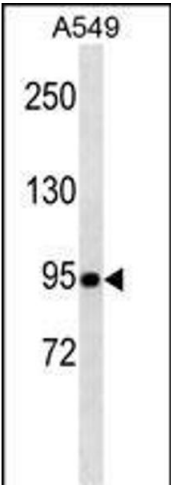
Preservative: Sodium azide

Precaution of Use: This product contains Sodium azide: a POISONOUS AND HAZARDOUS SUBSTANCE which should be handled by trained staff only.

Storage: 4 °C,-20 °C

Storage Comment: TLE1 Antibody (Center) can be refrigerated at 2-8 °C for up to 6 months. For long term storage, keep at -20 °C.

Expiry Date: 6 months



Western Blotting

Image 1. TLE1 Antibody (Center) (ABIN1537685 and ABIN2843819) western blot analysis in A549 cell line lysates (35 µg/lane). This demonstrates the TLE1 antibody detected the TLE1 protein (arrow).