



[Go to Product page](#)

Datasheet for ABIN1537704
anti-MLH1 antibody (AA 458-489)

1 Image

Overview

Quantity:	0.1 mL
Target:	MLH1
Binding Specificity:	AA 458-489
Reactivity:	Human
Host:	Mouse
Clonality:	Monoclonal
Conjugate:	This MLH1 antibody is un-conjugated
Application:	Western Blotting (WB)

Product Details

Immunogen:	This MLH1 antibody is generated from mice immunized with a KLH conjugated synthetic peptide between 458-489 amino acids from the Central region of human MLH1.
Clone:	628CT4-6-1
Isotype:	IgG1
Purification:	Mouse monoclonal antibody supplied in crude ascites with 0.09% (W/V) sodium azide.

Target Details

Target:	MLH1
Alternative Name:	MLH1 (MLH1 Products)
Background:	This gene was identified as a locus frequently mutated in hereditary nonpolyposis colon cancer

Target Details

(HNPCC). It is a human homolog of the E. coli DNA mismatch repair gene mutL, consistent with the characteristic alterations in microsatellite sequences (RER+phenotype) found in HNPCC. Alternative splicing results in multiple transcript variants encoding distinct isoforms. Additional transcript variants have been described, but their full-length natures have not been determined.

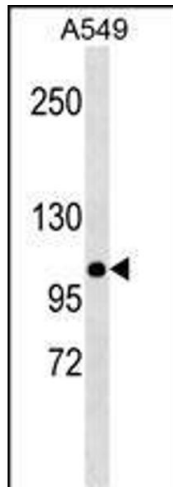
Molecular Weight:	84601
Gene ID:	4292
NCBI Accession:	NP_000240 , NP_001161089 , NP_001161090 , NP_001161091 , NP_001245200 , NP_001245202 , NP_001245203
UniProt:	P40692
Pathways:	DNA Damage Repair , Production of Molecular Mediator of Immune Response

Application Details

Application Notes:	WB: 1:100~400
Restrictions:	For Research Use only

Handling

Format:	Liquid
Buffer:	Mouse monoclonal antibody supplied in crude ascites with 0.09 % (W/V) sodium azide.
Preservative:	Sodium azide
Precaution of Use:	This product contains Sodium azide: a POISONOUS AND HAZARDOUS SUBSTANCE which should be handled by trained staff only.
Storage:	4 °C, -20 °C
Storage Comment:	MLH1 Antibody (Center)(Ascites) can be refrigerated at 2-8 °C for up to 6 months. For long term storage, keep at -20 °C.
Expiry Date:	6 months



Western Blotting

Image 1. MLH1 Antibody (Center)(Ascites) ABIN1537704 western blot analysis in A549 cell line lysates (35 μ g/lane). This demonstrates the MLH1 antibody detected the MLH1 protein (arrow).