

Datasheet for ABIN1537709
anti-ALDH1A3 antibody (AA 318-348)[Go to Product page](#)

3 Images

Overview

Quantity:	400 µL
Target:	ALDH1A3
Binding Specificity:	AA 318-348
Reactivity:	Human, Mouse
Host:	Rabbit
Clonality:	Polyclonal
Conjugate:	This ALDH1A3 antibody is un-conjugated
Application:	Western Blotting (WB), Immunohistochemistry (Paraffin-embedded Sections) (IHC (p))

Product Details

Immunogen:	This ALDH1A3 antibody is generated from rabbits immunized with a KLH conjugated synthetic peptide between 318-348 amino acids from the Central region of human ALDH1A3.
Clone:	RB16820
Isotype:	Ig Fraction
Purification:	This antibody is prepared by Saturated Ammonium Sulfate (SAS) precipitation followed by dialysis against PBS.

Target Details

Target:	ALDH1A3
Alternative Name:	ALDH1A3 (ALDH1A3 Products)

Target Details

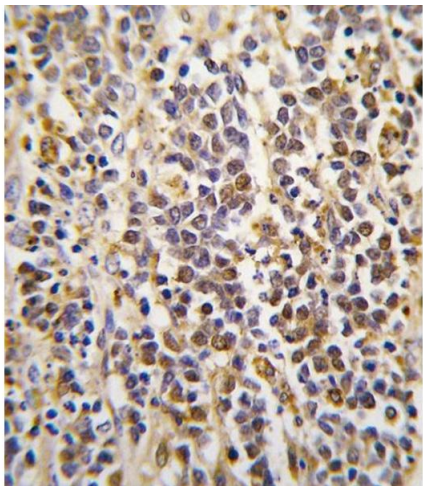
Background:	Aldehyde dehydrogenase isozymes are thought to play a major role in the detoxification of aldehydes generated by alcohol metabolism and lipid peroxidation. The enzyme ALDH1A3 uses retinal as a substrate, either in a free or cellular retinol-binding protein form.
Molecular Weight:	56108
Gene ID:	220
NCBI Accession:	NP_000684
UniProt:	P47895
Pathways:	Retinoic Acid Receptor Signaling Pathway

Application Details

Application Notes:	WB: 1:1000. WB: 1:1000. IHC-P: 1:10~50
Restrictions:	For Research Use only

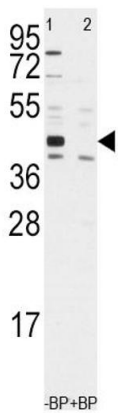
Handling

Format:	Liquid
Buffer:	Purified polyclonal antibody supplied in PBS with 0.09 % (W/V) sodium azide.
Preservative:	Sodium azide
Precaution of Use:	This product contains Sodium azide: a POISONOUS AND HAZARDOUS SUBSTANCE which should be handled by trained staff only.
Storage:	4 °C,-20 °C
Storage Comment:	Maintain refrigerated at 2-8 deg C for up to 6 months. For long term storage store at -20 deg C in small aliquots to prevent freeze-thaw cycles.
Expiry Date:	6 months



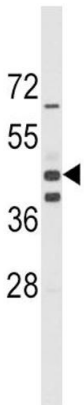
Immunohistochemistry (Paraffin-embedded Sections)

Image 1. Formalin-fixed and paraffin-embedded human kidney tissue reacted with ALDH1A3 Antibody (Center), which was peroxidase-conjugated to the secondary antibody, followed by DAB staining. This data demonstrates the use of this antibody for immunohistochemistry, clinical relevance has not been evaluated.



Western Blotting

Image 2. Western blot analysis of anti-ALDH1A3 Antibody (Center) (ABIN1537709 and ABIN2841967) pre-incubated with and without blocking peptide in Jurkat cell line lysate. ALDH1A3 (arrow) was detected using the purified Pab.



Western Blotting

Image 3. Western blot analysis of ALDH1A3 Antibody (Center) (ABIN1537709 and ABIN2841967) in mouse spleen tissue lysates (35 µg/lane). ALDH1A3 (arrow) was detected using the purified Pab.