

Datasheet for ABIN1537710  
**anti-CKS1 antibody (AA 3-30)**[Go to Product page](#)

## 1 Image

## Overview

Quantity:	400 µL
Target:	CKS1 (CKS1B)
Binding Specificity:	AA 3-30
Reactivity:	Human
Host:	Rabbit
Clonality:	Polyclonal
Conjugate:	This CKS1 antibody is un-conjugated
Application:	Western Blotting (WB)

## Product Details

Immunogen:	This CKS1B antibody is generated from rabbits immunized with a KLH conjugated synthetic peptide between 3-30 amino acids from the Central region of human CKS1B.
Clone:	RB36295
Isotype:	Ig Fraction
Predicted Reactivity:	B, M
Purification:	This antibody is purified through a protein A column, followed by peptide affinity purification.

## Target Details

Target:	CKS1 (CKS1B)
Alternative Name:	CKS1B ( <a href="#">CKS1B Products</a> )

## Target Details

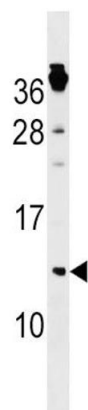
Background:	CKS1B protein binds to the catalytic subunit of the cyclin dependent kinases and is essential for their biological function. The CKS1B mRNA is found to be expressed in different patterns through the cell cycle in HeLa cells, which reflects a specialized role for the encoded protein. At least two transcript variants have been identified for this gene, and it appears that only one of them encodes a protein.
Molecular Weight:	9660
Gene ID:	1163
NCBI Accession:	<a href="#">NP_001817</a>
UniProt:	<a href="#">P61024</a>
Pathways:	<a href="#">Mitotic G1-G1/S Phases</a> , <a href="#">Inositol Metabolic Process</a>

## Application Details

Application Notes:	WB: 1:1000
Restrictions:	For Research Use only

## Handling

Format:	Liquid
Buffer:	Purified polyclonal antibody supplied in PBS with 0.09 % (W/V) sodium azide.
Preservative:	Sodium azide
Precaution of Use:	This product contains Sodium azide: a POISONOUS AND HAZARDOUS SUBSTANCE which should be handled by trained staff only.
Storage:	4 °C, -20 °C
Storage Comment:	CKS1B Antibody (Center) can be refrigerated at 2-8 °C for up to 6 months. For long term storage, keep at -20 °C.
Expiry Date:	6 months



Western Blotting

**Image 1.** CKS1B Antibody (Center) (ABIN1537710 and ABIN2848799) western blot analysis in NCI- cell line lysates (35 µg/lane). This demonstrates the CKS1B antibody detected the CKS1B protein (arrow).