

Datasheet for ABIN1537715  
**anti-COMMD10 antibody (AA 102-128)**[Go to Product page](#)

## 1 Image

## Overview

Quantity:	400 µL
Target:	COMMD10
Binding Specificity:	AA 102-128
Reactivity:	Human, Mouse
Host:	Rabbit
Clonality:	Polyclonal
Conjugate:	This COMMD10 antibody is un-conjugated
Application:	Western Blotting (WB)

## Product Details

Immunogen:	This COMMD10 antibody is generated from rabbits immunized with a KLH conjugated synthetic peptide between 102-128 amino acids from the Central region of human COMMD10.
Clone:	RB38210
Isotype:	Ig Fraction
Purification:	This antibody is purified through a protein A column, followed by peptide affinity purification.

## Target Details

Target:	COMMD10
Alternative Name:	COMMD10 ( <a href="#">COMMD10 Products</a> )
Background:	The function of this protein remains unknown.

## Target Details

Molecular Weight:	22966
Gene ID:	51397
NCBI Accession:	<a href="#">NP_057228</a>
UniProt:	<a href="#">Q9Y6G5</a>

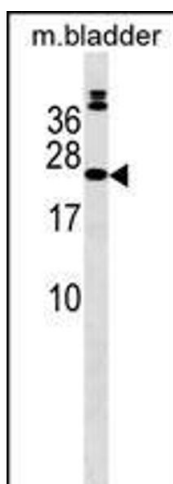
## Application Details

Application Notes:	WB: 1:1000
Restrictions:	For Research Use only

## Handling

Format:	Liquid
Buffer:	Purified polyclonal antibody supplied in PBS with 0.09 % (W/V) sodium azide.
Preservative:	Sodium azide
Precaution of Use:	This product contains Sodium azide: a POISONOUS AND HAZARDOUS SUBSTANCE which should be handled by trained staff only.
Storage:	4 °C, -20 °C
Storage Comment:	COMMD10 Antibody (Center) can be refrigerated at 2-8 °C for up to 6 months. For long term storage, keep at -20 °C.
Expiry Date:	6 months

## Images



### Western Blotting

**Image 1.** COD10 Antibody (Center) (ABIN1537715 and ABIN2849862) western blot analysis in mouse bladder tissue lysates (35 µg/lane). This demonstrates the COD10 Antibody detected the COD10 protein (arrow).