



[Go to Product page](#)

Datasheet for ABIN1537716  
**anti-RAP2B antibody (AA 102-129)**

2 Images

Overview

Quantity:	400 µL
Target:	RAP2B
Binding Specificity:	AA 102-129
Reactivity:	Human
Host:	Rabbit
Clonality:	Polyclonal
Conjugate:	This RAP2B antibody is un-conjugated
Application:	Western Blotting (WB)

Product Details

Immunogen:	This RAP2B antibody is generated from rabbits immunized with a KLH conjugated synthetic peptide between 102-129 amino acids from the Central region of human RAP2B.
Clone:	RB37054
Isotype:	Ig Fraction
Predicted Reactivity:	Pig, M, Rat
Purification:	This antibody is purified through a protein A column, followed by peptide affinity purification.

Target Details

Target:	RAP2B
Alternative Name:	RAP2B ( <a href="#">RAP2B Products</a> )

## Target Details

---

**Background:** This intronless gene belongs to a family of RAS-related genes. The proteins encoded by these genes share approximately 50 % amino acid identity with the classical RAS proteins and have numerous structural features in common. The most striking difference between the RAP and RAS proteins resides in their 61st amino acid: glutamine in RAS is replaced by threonine in RAP proteins. Evidence suggests that this protein may be polyisoprenylated and palmitoylated.

**Molecular Weight:** 20504

**Gene ID:** 5912

**NCBI Accession:** [NP\\_002877](#)

**UniProt:** [P61225](#)

## Application Details

---

**Application Notes:** WB: 1:1000. WB: 1:1000

**Restrictions:** For Research Use only

## Handling

---

**Format:** Liquid

**Buffer:** Purified polyclonal antibody supplied in PBS with 0.09 % (W/V) sodium azide.

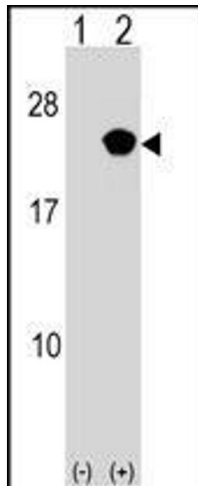
**Preservative:** Sodium azide

**Precaution of Use:** This product contains Sodium azide: a POISONOUS AND HAZARDOUS SUBSTANCE which should be handled by trained staff only.

**Storage:** 4 °C,-20 °C

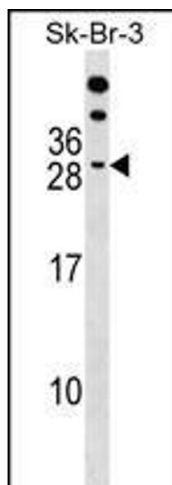
**Storage Comment:** RAP2B Antibody (Center) can be refrigerated at 2-8 °C for up to 6 months. For long term storage, keep at -20 °C.

**Expiry Date:** 6 months



#### Western Blotting

**Image 1.** Western blot analysis of RB (arrow) using rabbit polyclonal RB Antibody (Center) (ABIN1537716 and ABIN2849042). 293 cell lysates (2 µg/lane) either nontransfected (Lane 1) or transiently transfected (Lane 2) with the RB gene.



#### Western Blotting

**Image 2.** RB Antibody (Center) (ABIN1537716 and ABIN2849042) western blot analysis in SK-BR-3 cell line lysates (35 µg/lane). This demonstrates the RB antibody detected the RB protein (arrow).