

Datasheet for ABIN1537717  
**anti-PTRH1 antibody (AA 102-129)**[Go to Product page](#)

## 1 Image

## Overview

Quantity:	400 µL
Target:	PTRH1
Binding Specificity:	AA 102-129
Reactivity:	Human
Host:	Rabbit
Clonality:	Polyclonal
Conjugate:	This PTRH1 antibody is un-conjugated
Application:	Western Blotting (WB)

## Product Details

Immunogen:	This PTRH1 antibody is generated from rabbits immunized with a KLH conjugated synthetic peptide between 102-129 amino acids from the Central region of human PTRH1.
Clone:	RB37971
Isotype:	Ig Fraction
Purification:	This antibody is purified through a protein A column, followed by peptide affinity purification.

## Target Details

Target:	PTRH1
Alternative Name:	PTRH1 ( <a href="#">PTRH1 Products</a> )
Background:	C9orf115 belongs to the Peptidyl-tRNA hydrolase (PTH) family. Peptidyl-tRNA hydrolase (PTH)

## Target Details

is a monomeric protein that cleaves the ester bond linking the nascent peptide and tRNA when peptidyl-tRNA is released prematurely from the ribosome. This ensures the recycling of peptidyl-tRNAs into tRNAs produced through abortion of translation and is essential for cell viability.

Molecular Weight: 22937

Gene ID: 138428

NCBI Accession: [NP\\_001002913](#)

UniProt: [Q86Y79](#)

## Application Details

Application Notes: WB: 1:1000

Restrictions: For Research Use only

## Handling

Format: Liquid

Buffer: Purified polyclonal antibody supplied in PBS with 0.09 % (W/V) sodium azide.

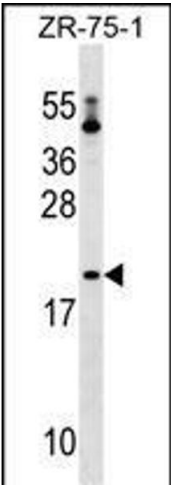
Preservative: Sodium azide

Precaution of Use: This product contains Sodium azide: a POISONOUS AND HAZARDOUS SUBSTANCE which should be handled by trained staff only.

Storage: 4 °C, -20 °C

Storage Comment: PTRH1 Antibody (Center) can be refrigerated at 2-8 °C for up to 6 months. For long term storage, keep at -20 °C.

Expiry Date: 6 months



Western Blotting

**Image 1.** PTRH1 Antibody (Center) (ABIN1537717 and ABIN2849316) western blot analysis in ZR-75-1 cell line lysates (35 µg/lane). This demonstrates the PTRH1 antibody detected the PTRH1 protein (arrow).