

Datasheet for ABIN1537723
anti-ARGFX antibody (AA 103-132)[Go to Product page](#)

2 Images

Overview

Quantity:	400 µL
Target:	ARGFX
Binding Specificity:	AA 103-132
Reactivity:	Human
Host:	Rabbit
Clonality:	Polyclonal
Conjugate:	This ARGFX antibody is un-conjugated
Application:	Western Blotting (WB), Immunofluorescence (IF)

Product Details

Immunogen:	This ARGFX antibody is generated from rabbits immunized with a KLH conjugated synthetic peptide between 103-132 amino acids from the Central region of human ARGFX.
Clone:	RB37665
Isotype:	Ig Fraction
Purification:	This antibody is purified through a protein A column, followed by peptide affinity purification.

Target Details

Target:	ARGFX
Alternative Name:	ARGFX (ARGFX Products)
Background:	Homeobox genes encode DNA-binding proteins, many of which are thought to be involved in

Target Details

early embryonic development. Homeobox genes encode a DNA-binding domain of 60 to 63 amino acids referred to as the homeodomain. This gene is a member of the ARGFX homeobox gene family.

Molecular Weight: 35617

Gene ID: 503582

NCBI Accession: [NP_001012677](#)

UniProt: [A6NJG6](#)

Application Details

Application Notes: IF: 1:10~50. WB: 1:1000

Restrictions: For Research Use only

Handling

Format: Liquid

Buffer: Purified polyclonal antibody supplied in PBS with 0.09 % (W/V) sodium azide.

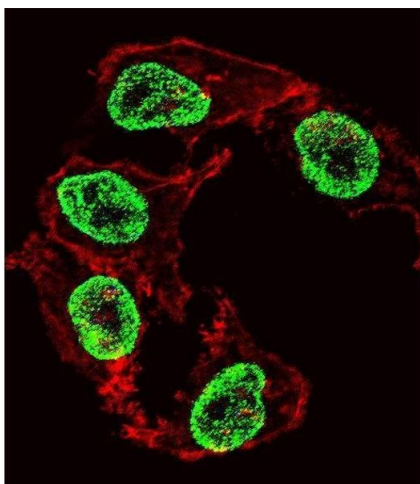
Preservative: Sodium azide

Precaution of Use: This product contains Sodium azide: a POISONOUS AND HAZARDOUS SUBSTANCE which should be handled by trained staff only.

Storage: 4 °C, -20 °C

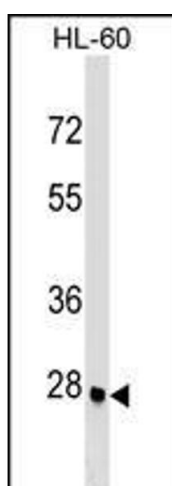
Storage Comment: ARGFX Antibody (Center) can be refrigerated at 2-8 °C for up to 6 months. For long term storage, keep at -20 °C.

Expiry Date: 6 months



Immunofluorescence

Image 1. Fluorescent confocal image of HepG2 cell stained with ARGFX Antibody (Center) (ABIN1537723 and ABIN2849257). HepG2 cells were fixed with 4 % PFA (20 min), permeabilized with Triton X-100 (0.1 %, 10 min), then incubated with ARGFX primary antibody (1:25, 1 h at 37 °C). For secondary antibody, Alexa Fluor® 488 conjugated donkey anti-rabbit antibody (green) was used (1:400, 50 min at 37 °C). Cytoplasmic actin was counterstained with Alexa Fluor® 555 (red) conjugated Phalloidin (7 units/mL, 1 h at 37 °C). Nuclei were counterstained with DAPI (blue) (10 µg/mL, 10 min). ARGFX immunoreactivity is localized to Nucleus significantly.



Western Blotting

Image 2. ARGFX Antibody (Center) (ABIN1537723 and ABIN2849257) western blot analysis in HL-60 cell line lysates (35 µg/lane). This demonstrates the ARGFX antibody detected the ARGFX protein (arrow).