

Datasheet for ABIN1537728
anti-RAB2B antibody (AA 105-131)[Go to Product page](#)

1 Image

Overview

Quantity:	400 µL
Target:	RAB2B
Binding Specificity:	AA 105-131
Reactivity:	Human
Host:	Rabbit
Clonality:	Polyclonal
Conjugate:	This RAB2B antibody is un-conjugated
Application:	Western Blotting (WB)

Product Details

Immunogen:	This RAB2B antibody is generated from rabbits immunized with a KLH conjugated synthetic peptide between 105-131 amino acids from the Central region of human RAB2B.
Clone:	RB37972
Isotype:	Ig Fraction
Predicted Reactivity:	M
Purification:	This antibody is purified through a protein A column, followed by peptide affinity purification.

Target Details

Target:	RAB2B
Alternative Name:	RAB2B (RAB2B Products)

Target Details

Background: Members of the Rab protein family are nontransforming monomeric GTP-binding proteins of the Ras superfamily that contain 4 highly conserved regions involved in GTP binding and hydrolysis. Rab proteins are prenylated, membrane-bound proteins involved in vesicular fusion and trafficking, see MIM 179508.[supplied by OMIM].

Molecular Weight: 24214

Gene ID: 84932

NCBI Accession: [NP_116235](#)

UniProt: [Q8WUD1](#)

Application Details

Application Notes: WB: 1:1000

Restrictions: For Research Use only

Handling

Format: Liquid

Buffer: Purified polyclonal antibody supplied in PBS with 0.09 % (W/V) sodium azide.

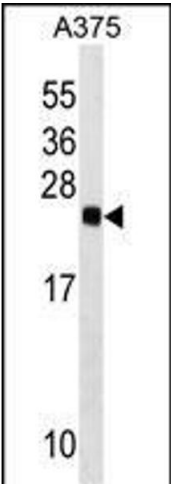
Preservative: Sodium azide

Precaution of Use: This product contains Sodium azide: a POISONOUS AND HAZARDOUS SUBSTANCE which should be handled by trained staff only.

Storage: 4 °C, -20 °C

Storage Comment: RAB2B Antibody (Center) can be refrigerated at 2-8 °C for up to 6 months. For long term storage, keep at -20 °C.

Expiry Date: 6 months



Western Blotting

Image 1. RAB2B Antibody (Center) (ABIN1537728 and ABIN2849442) western blot analysis in cell line lysates (35 µg/lane). This demonstrates the RAB2B antibody detected the RAB2B protein (arrow).