



[Go to Product page](#)

Datasheet for ABIN1537734
anti-SAP30L antibody (AA 106-134)

1 Image

Overview

Quantity:	400 µL
Target:	SAP30L
Binding Specificity:	AA 106-134
Reactivity:	Human
Host:	Rabbit
Clonality:	Polyclonal
Application:	Western Blotting (WB)

Product Details

Immunogen:	This SAP30L antibody is generated from rabbits immunized with a KLH conjugated synthetic peptide between 106-134 amino acids from the Central region of human SAP30L.
Clone:	RB37364
Isotype:	Ig Fraction
Predicted Reactivity:	M
Purification:	This antibody is purified through a protein A column, followed by peptide affinity purification.

Target Details

Target:	SAP30L
Alternative Name:	SAP30L (SAP30L Products)
Background:	SAP30L is involved in the functional recruitment of the class 1 Sin3-histone deacetylase

Target Details

complex (HDAC) to the nucleolus.

Molecular Weight: 20877

Gene ID: 79685

NCBI Accession: [NP_001124534](#), [NP_001124535](#), [NP_078908](#)

UniProt: [Q9HAJ7](#)

Application Details

Application Notes: WB: 1:1000

Restrictions: For Research Use only

Handling

Format: Liquid

Buffer: Purified polyclonal antibody supplied in PBS with 0.09 % (W/V) sodium azide.

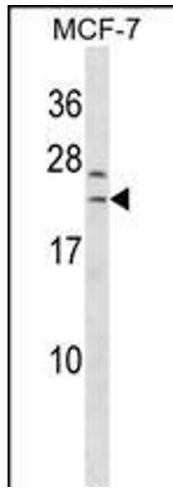
Preservative: Sodium azide

Precaution of Use: This product contains Sodium azide: a POISONOUS AND HAZARDOUS SUBSTANCE which should be handled by trained staff only.

Storage: 4 °C, -20 °C

Storage Comment: SAP30L Antibody (Center) can be refrigerated at 2-8 °C for up to 6 months. For long term storage, keep at -20 °C.

Expiry Date: 6 months



Western Blotting

Image 1. SL Antibody (Center) (ABIN1537734 and ABIN2850106) western blot analysis in MCF-7 cell line lysates (35 μ g/lane). This demonstrates the SL antibody detected the SL protein (arrow).