

Datasheet for ABIN1537736  
**anti-SIRPD antibody (AA 107-133)**[Go to Product page](#)

## 1 Image

## Overview

Quantity:	400 µL
Target:	SIRPD
Binding Specificity:	AA 107-133
Reactivity:	Human
Host:	Rabbit
Clonality:	Polyclonal
Conjugate:	This SIRPD antibody is un-conjugated
Application:	Western Blotting (WB)

## Product Details

Immunogen:	This SIRPD antibody is generated from rabbits immunized with a KLH conjugated synthetic peptide between 107-133 amino acids from the Central region of human SIRPD.
Clone:	RB38400
Isotype:	Ig Fraction
Purification:	This antibody is purified through a protein A column, followed by peptide affinity purification.

## Target Details

Target:	SIRPD
Alternative Name:	SIRPD ( <a href="#">SIRPD Products</a> )
Background:	Contains 1 Ig-like V-type (immunoglobulin-like) domain.

## Target Details

Gene ID:	128646
NCBI Accession:	<a href="#">NP_848555</a>
UniProt:	<a href="#">Q9H106</a>

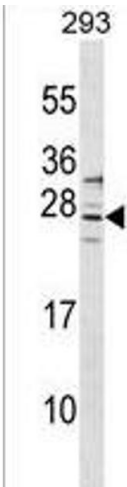
## Application Details

Application Notes:	WB: 1:1000
Restrictions:	For Research Use only

## Handling

Format:	Liquid
Buffer:	Purified polyclonal antibody supplied in PBS with 0.09 % (W/V) sodium azide.
Preservative:	Sodium azide
Precaution of Use:	This product contains Sodium azide: a POISONOUS AND HAZARDOUS SUBSTANCE which should be handled by trained staff only.
Storage:	4 °C,-20 °C
Storage Comment:	SIRPD Antibody (Center) can be refrigerated at 2-8 °C for up to 6 months. For long term storage, keep at -20 °C.
Expiry Date:	6 months

## Images



### Western Blotting

**Image 1.** SIRPD Antibody (Center) (ABIN1537736 and ABIN2849878) western blot analysis in 293 cell line lysates (35 µg/lane). This demonstrates the SIRPD Antibody detected the SIRPD protein (arrow).