

Datasheet for ABIN1537740
anti-SIRPB1 antibody (AA 107-134)[Go to Product page](#)

1 Image

Overview

Quantity:	400 µL
Target:	SIRPB1
Binding Specificity:	AA 107-134
Reactivity:	Human
Host:	Rabbit
Clonality:	Polyclonal
Conjugate:	This SIRPB1 antibody is un-conjugated
Application:	Western Blotting (WB)

Product Details

Immunogen:	This SIRPB1 antibody is generated from rabbits immunized with a KLH conjugated synthetic peptide between 107-134 amino acids from the Central region of human SIRPB1.
Clone:	RB39862
Isotype:	Ig Fraction
Purification:	This antibody is purified through a protein A column, followed by peptide affinity purification.

Target Details

Target:	SIRPB1
Alternative Name:	SIRPB1 (SIRPB1 Products)
Background:	The protein encoded by this gene is a member of the signal-regulatory-protein (SIRP) family,

Target Details

and also belongs to the immunoglobulin superfamily. SIRP family members are receptor-type transmembrane glycoproteins known to be involved in the negative regulation of receptor tyrosine kinase-coupled signaling processes. This protein was found to interact with TYROBP/DAP12, a protein bearing immunoreceptor tyrosine-based activation motifs. This protein was also reported to participate in the recruitment of tyrosine kinase SYK. Multiple transcript variants encoding different isoforms have been found for this gene. [provided by RefSeq].

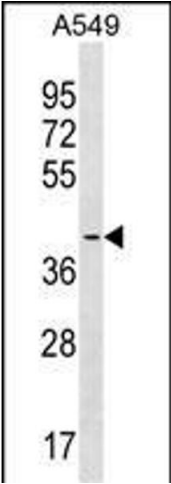
Molecular Weight:	43211
Gene ID:	10326
NCBI Accession:	NP_001077379 , NP_006056
UniProt:	O00241

Application Details

Application Notes:	WB: 1:1000
Restrictions:	For Research Use only

Handling

Format:	Liquid
Buffer:	Purified polyclonal antibody supplied in PBS with 0.09 % (W/V) sodium azide.
Preservative:	Sodium azide
Precaution of Use:	This product contains Sodium azide: a POISONOUS AND HAZARDOUS SUBSTANCE which should be handled by trained staff only.
Storage:	4 °C, -20 °C
Storage Comment:	SIRPB1 Antibody (Center) can be refrigerated at 2-8 °C for up to 6 months. For long term storage, keep at -20 °C.
Expiry Date:	6 months



Western Blotting

Image 1. SIRPB1 Antibody (Center) (ABIN1537740 and ABIN2838301) western blot analysis in A549 cell line lysates (35 µg/lane). This demonstrates the SIRPB1 antibody detected the SIRPB1 protein (arrow).