

Datasheet for ABIN1537741
anti-ITGB1BP1 antibody (AA 108-136)[Go to Product page](#)

1 Image

Overview

Quantity:	400 µL
Target:	ITGB1BP1
Binding Specificity:	AA 108-136
Reactivity:	Human
Host:	Rabbit
Clonality:	Polyclonal
Conjugate:	This ITGB1BP1 antibody is un-conjugated
Application:	Western Blotting (WB)

Product Details

Immunogen:	This ITGB1BP1 antibody is generated from rabbits immunized with a KLH conjugated synthetic peptide between 108-136 amino acids from the Central region of human ITGB1BP1.
Clone:	RB36994
Isotype:	Ig Fraction
Predicted Reactivity:	B
Purification:	This antibody is purified through a protein A column, followed by peptide affinity purification.

Target Details

Target:	ITGB1BP1
Alternative Name:	ITGB1BP1 (ITGB1BP1 Products)

Target Details

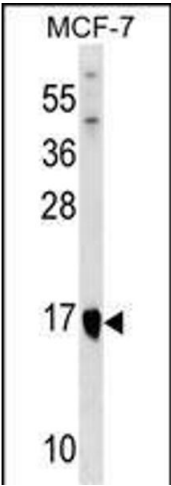
Background:	The cytoplasmic domains of integrins are essential for cell adhesion. The protein encoded by this gene binds to the beta1 integrin cytoplasmic domain. The interaction between this protein and beta1 integrin is highly specific. Two isoforms of this protein are derived from alternatively spliced transcripts. The shorter form of this protein does not interact with the beta1 integrin cytoplasmic domain. The longer form is a phosphoprotein and the extent of its phosphorylation is regulated by the cell-matrix interaction, suggesting an important role of this protein during integrin-dependent cell adhesion.
Molecular Weight:	21782
Gene ID:	9270
NCBI Accession:	NP_004754 , NP_071729
UniProt:	O14713
Pathways:	Tube Formation

Application Details

Application Notes:	WB: 1:1000
Restrictions:	For Research Use only

Handling

Format:	Liquid
Buffer:	Purified polyclonal antibody supplied in PBS with 0.09 % (W/V) sodium azide.
Preservative:	Sodium azide
Precaution of Use:	This product contains Sodium azide: a POISONOUS AND HAZARDOUS SUBSTANCE which should be handled by trained staff only.
Storage:	4 °C,-20 °C
Storage Comment:	ITGB1BP1 Antibody (Center) can be refrigerated at 2-8 °C for up to 6 months. For long term storage, keep at -20 °C.
Expiry Date:	6 months



Western Blotting

Image 1. ITGB1BP1 Antibody (Center) (ABIN1537741 and ABIN2849156) western blot analysis in MCF-7 cell line lysates (35 µg/lane). This demonstrates the ITGB1BP1 antibody detected the ITGB1BP1 protein (arrow).