

Datasheet for ABIN1537750
anti-CLEC2D antibody (AA 109-137)[Go to Product page](#)

1 Image

Overview

Quantity:	400 µL
Target:	CLEC2D
Binding Specificity:	AA 109-137
Reactivity:	Human
Host:	Rabbit
Clonality:	Polyclonal
Conjugate:	This CLEC2D antibody is un-conjugated
Application:	Western Blotting (WB)

Product Details

Immunogen:	This CLEC2D antibody is generated from rabbits immunized with a KLH conjugated synthetic peptide between 109-137 amino acids from the Central region of human CLEC2D.
Clone:	RB38735
Isotype:	Ig Fraction
Purification:	This antibody is purified through a protein A column, followed by peptide affinity purification.

Target Details

Target:	CLEC2D
Alternative Name:	CLEC2D (CLEC2D Products)
Background:	This gene encodes a member of the natural killer cell receptor C-type lectin family. The encoded

Target Details

protein inhibits osteoclast formation and contains a transmembrane domain near the N-terminus as well as the C-type lectin-like extracellular domain. Several alternatively spliced transcript variants have been identified for this gene.

Molecular Weight: 21849

Gene ID: 29121

NCBI Accession: [NP_001004419](#), [NP_001184246](#), [NP_001184247](#), [NP_001184248](#), [NP_037401](#)

UniProt: [Q9UHP7](#)

Pathways: [Regulation of Leukocyte Mediated Immunity](#)

Application Details

Application Notes: WB: 1:1000

Restrictions: For Research Use only

Handling

Format: Liquid

Buffer: Purified polyclonal antibody supplied in PBS with 0.09 % (W/V) sodium azide.

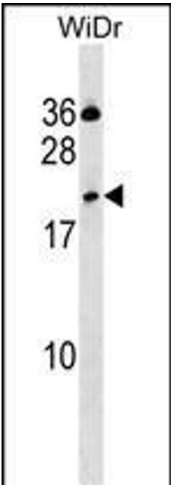
Preservative: Sodium azide

Precaution of Use: This product contains Sodium azide: a POISONOUS AND HAZARDOUS SUBSTANCE which should be handled by trained staff only.

Storage: 4 °C, -20 °C

Storage Comment: CLEC2D Antibody (Center) can be refrigerated at 2-8 °C for up to 6 months. For long term storage, keep at -20 °C.

Expiry Date: 6 months



Western Blotting

Image 1. CLEC2D Antibody (Center) (ABIN1537750 and ABIN2850340) western blot analysis in WiDr cell line lysates (35 µg/lane). This demonstrates the CLEC2D antibody detected the CLEC2D protein (arrow).