

Datasheet for ABIN1537757  
**anti-MSX1 antibody (AA 111-138)**[Go to Product page](#)

## 5 Images

## Overview

Quantity:	400 µL
Target:	MSX1
Binding Specificity:	AA 111-138
Reactivity:	Human, Mouse
Host:	Rabbit
Clonality:	Polyclonal
Conjugate:	This MSX1 antibody is un-conjugated
Application:	Western Blotting (WB), Immunofluorescence (IF)

## Product Details

Immunogen:	This MSX1 antibody is generated from rabbits immunized with a KLH conjugated synthetic peptide between 111-138 amino acids from the Central region of human MSX1.
Clone:	RB30384
Isotype:	Ig Fraction
Predicted Reactivity:	B
Purification:	This antibody is purified through a protein A column, followed by peptide affinity purification.

## Target Details

Target:	MSX1
Alternative Name:	MSX1 ( <a href="#">MSX1 Products</a> )

## Target Details

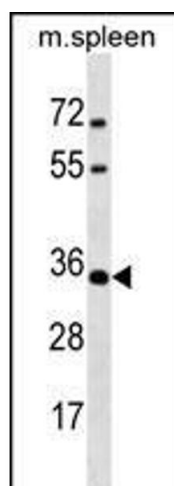
Background:	This gene encodes a member of the muscle segment homeobox gene family. The encoded protein functions as a transcriptional repressor during embryogenesis through interactions with components of the core transcription complex and other homeoproteins. It may also have roles in limb-pattern formation, craniofacial development, particularly odontogenesis, and tumor growth inhibition. Mutations in this gene, which was once known as homeobox 7, have been associated with nonsyndromic cleft lip with or without cleft palate 5, Witkop syndrome, Wolf-Hirschorn syndrome, and autosomal dominant hypodontia.
Molecular Weight:	31496
Gene ID:	4487
NCBI Accession:	<a href="#">NP_002439</a>
UniProt:	<a href="#">P28360</a>
Pathways:	<a href="#">Regulation of Muscle Cell Differentiation</a> , <a href="#">Positive Regulation of Response to DNA Damage Stimulus</a>

## Application Details

Application Notes:	IF: 1:10~50. IF: 1:200. WB: 1:1000. WB: 1:2000. WB: 1:1000
Restrictions:	For Research Use only

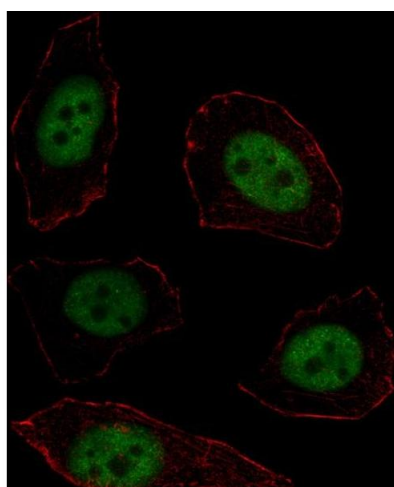
## Handling

Format:	Liquid
Buffer:	Purified polyclonal antibody supplied in PBS with 0.09 % (W/V) sodium azide.
Preservative:	Sodium azide
Precaution of Use:	This product contains Sodium azide: a POISONOUS AND HAZARDOUS SUBSTANCE which should be handled by trained staff only.
Storage:	4 °C, -20 °C
Storage Comment:	MSX1 Antibody (Center) can be refrigerated at 2-8 °C for up to 6 months. For long term storage, keep at -20 °C.
Expiry Date:	6 months



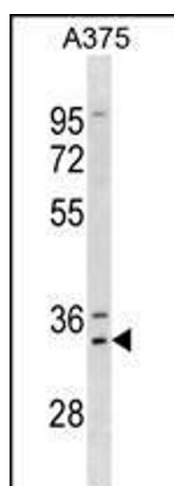
#### Western Blotting

**Image 1.** MSX1 Antibody (Center) (ABIN1537757 and ABIN2838265) western blot analysis in mouse spleen tissue lysates (35 µg/lane). This demonstrates the MSX1 antibody detected the MSX1 protein (arrow).



#### Immunofluorescence

**Image 2.** Fluorescent image of cell stained with MSX1 Antibody (Center) (ABIN1537757 and ABIN2838265). cells were fixed with 4 % PFA (20 min), permeabilized with Triton X-100 (0.1 %, 10 min), then incubated with MSX1 primary antibody (1:25, 1 h at 37 °C). For secondary antibody, Alexa Fluor® 488 conjugated donkey anti-rabbit antibody (green) was used (1:400, 50 min at 37 °C). Cytoplasmic actin was counterstained with Alexa Fluor® 555 (red) conjugated Phalloidin (7 units/mL, 1 h at 37 °C). MSX1 immunoreactivity is localized to Nucleus significantly.



#### Western Blotting

**Image 3.** MSX1 Antibody (Center) (ABIN1537757 and ABIN2838265) western blot analysis in cell line lysates (35 µg/lane). This demonstrates the MSX1 antibody detected the MSX1 protein (arrow).

Please check the [product details page](#) for more images. Overall 5 images are available for ABIN1537757.