



[Go to Product page](#)

Datasheet for ABIN1537765  
**anti-MRPS10 antibody (AA 113-141)**

1 Image

Overview

Quantity:	400 µL
Target:	MRPS10
Binding Specificity:	AA 113-141
Reactivity:	Human
Host:	Rabbit
Clonality:	Polyclonal
Conjugate:	This MRPS10 antibody is un-conjugated
Application:	Western Blotting (WB)

Product Details

Immunogen:	This MRPS10 antibody is generated from rabbits immunized with a KLH conjugated synthetic peptide between 113-141 amino acids from the Central region of human MRPS10.
Clone:	RB37344
Isotype:	Ig Fraction
Predicted Reactivity:	B, M, Rat
Purification:	This antibody is purified through a protein A column, followed by peptide affinity purification.

Target Details

Target:	MRPS10
Alternative Name:	MRPS10 ( <a href="#">MRPS10 Products</a> )

## Target Details

---

**Background:** Mammalian mitochondrial ribosomal proteins are encoded by nuclear genes and help in protein synthesis within the mitochondrion. Mitochondrial ribosomes (mitoribosomes) consist of a small 28S subunit and a large 39S subunit. They have an estimated 75 % protein to rRNA composition compared to prokaryotic ribosomes, where this ratio is reversed. Another difference between mammalian mitoribosomes and prokaryotic ribosomes is that the latter contain a 5S rRNA. Among different species, the proteins comprising the mitoribosome differ greatly in sequence, and sometimes in biochemical properties, which prevents easy recognition by sequence homology. This gene encodes a 28S subunit protein that belongs to the ribosomal protein S10P family. Pseudogenes corresponding to this gene are found on chromosomes 1q, 3p, and 9p. [provided by RefSeq].

---

**Molecular Weight:** 22999

---

**Gene ID:** 55173

---

**NCBI Accession:** [NP\\_060611](#)

---

**UniProt:** [P82664](#)

## Application Details

---

**Application Notes:** WB: 1:1000

**Restrictions:** For Research Use only

## Handling

---

**Format:** Liquid

**Buffer:** Purified polyclonal antibody supplied in PBS with 0.09 % (W/V) sodium azide.

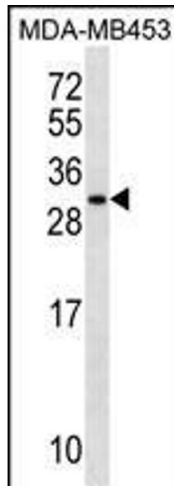
**Preservative:** Sodium azide

**Precaution of Use:** This product contains Sodium azide: a POISONOUS AND HAZARDOUS SUBSTANCE which should be handled by trained staff only.

**Storage:** 4 °C, -20 °C

**Storage Comment:** MRPS10 Antibody (Center) can be refrigerated at 2-8 °C for up to 6 months. For long term storage, keep at -20 °C.

**Expiry Date:** 6 months



### Western Blotting

**Image 1.** MRPS10 Antibody (Center) (ABIN1537765 and ABIN2850104) western blot analysis in MDA-M cell line lysates (35 µg/lane). This demonstrates the MRPS10 antibody detected the MRPS10 protein (arrow).