

Datasheet for ABIN1537767
anti-DEDD antibody (AA 165-191)



[Go to Product page](#)

1 Image

Overview

Quantity:	400 µL
Target:	DEDD
Binding Specificity:	AA 165-191
Reactivity:	Human
Host:	Rabbit
Clonality:	Polyclonal
Conjugate:	This DEDD antibody is un-conjugated
Application:	Western Blotting (WB)

Product Details

Immunogen:	This DEDD antibody is generated from rabbits immunized with a KLH conjugated synthetic peptide between 165-191 amino acids from the Central region of human DEDD.
Clone:	RB38588
Isotype:	Ig Fraction
Predicted Reactivity:	M, Rat
Purification:	This antibody is purified through a protein A column, followed by peptide affinity purification.

Target Details

Target:	DEDD
Alternative Name:	DEDD (DEDD Products)

Target Details

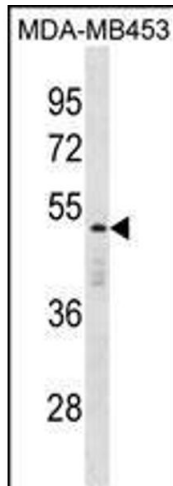
Background:	This gene encodes a protein that contains a death effector domain (DED). DED is a protein-protein interaction domain shared by adaptors, regulators and executors of the programmed cell death pathway. Overexpression of this gene was shown to induce weak apoptosis. Upon stimulation, this protein was found to translocate from cytoplasm to nucleus and colocalize with UBTF, a basal factor required for RNA polymerase I transcription, in the nucleolus. At least three transcript variants encoding the same protein have been found for this gene.
Molecular Weight:	36794
Gene ID:	9191
NCBI Accession:	NP_001034800 , NP_001034801 , NP_127491
UniProt:	O75618

Application Details

Application Notes:	WB: 1:1000
Restrictions:	For Research Use only

Handling

Format:	Liquid
Buffer:	Purified polyclonal antibody supplied in PBS with 0.09 % (W/V) sodium azide.
Preservative:	Sodium azide
Precaution of Use:	This product contains Sodium azide: a POISONOUS AND HAZARDOUS SUBSTANCE which should be handled by trained staff only.
Storage:	4 °C, -20 °C
Storage Comment:	DEDD Antibody (Center) can be refrigerated at 2-8 °C for up to 6 months. For long term storage, keep at -20 °C.
Expiry Date:	6 months



Western Blotting

Image 1. DEDD Antibody (Center) (ABIN1537767 and ABIN2850020) western blot analysis in MDA-M cell line lysates (35 µg/lane). This demonstrates the DEDD antibody detected the DEDD protein (arrow).