



[Go to Product page](#)

Datasheet for ABIN1537780
anti-RAB28 antibody (AA 119-147)

4 Images

Overview

Quantity:	400 µL
Target:	RAB28
Binding Specificity:	AA 119-147
Reactivity:	Human
Host:	Rabbit
Clonality:	Polyclonal
Conjugate:	This RAB28 antibody is un-conjugated
Application:	Western Blotting (WB), Immunohistochemistry (Paraffin-embedded Sections) (IHC (p)), Flow Cytometry (FACS)

Product Details

Immunogen:	This RAB28 antibody is generated from rabbits immunized with a KLH conjugated synthetic peptide between 119-147 amino acids from the Central region of human RAB28.
Clone:	RB36693
Isotype:	Ig Fraction
Purification:	This antibody is purified through a protein A column, followed by peptide affinity purification.

Target Details

Target:	RAB28
Alternative Name:	RAB28 (RAB28 Products)

Target Details

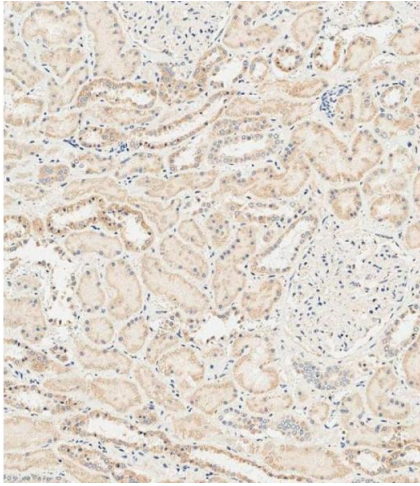
Background:	This gene encodes a member of the Rab subfamily of Ras-related small GTPases. The encoded protein may be involved in regulating intracellular trafficking. Alternative splicing results in multiple transcript variants. Pseudogenes of this gene are found on chromosomes 9 and X.
Molecular Weight:	24841
Gene ID:	9364
NCBI Accession:	NP_001017979 , NP_001153073 , NP_004240
UniProt:	P51157

Application Details

Application Notes:	WB: 1:1000. WB: 1:1000. IHC-P-Leica: 1:500. FC: 1:25
Restrictions:	For Research Use only

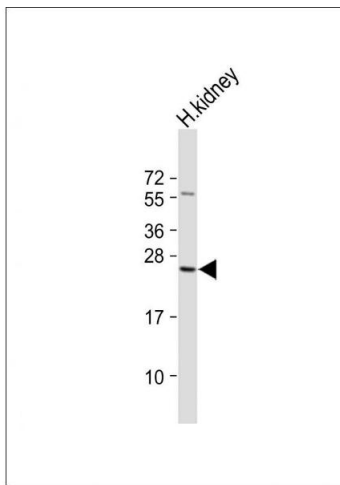
Handling

Format:	Liquid
Buffer:	Purified polyclonal antibody supplied in PBS with 0.09 % (W/V) sodium azide.
Preservative:	Sodium azide
Precaution of Use:	This product contains Sodium azide: a POISONOUS AND HAZARDOUS SUBSTANCE which should be handled by trained staff only.
Storage:	4 °C, -20 °C
Storage Comment:	RAB28 Antibody (Center) can be refrigerated at 2-8 °C for up to 6 months. For long term storage, keep at -20 °C.
Expiry Date:	6 months



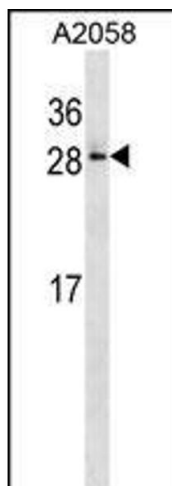
Immunohistochemistry (Paraffin-embedded Sections)

Image 1. Immunohistochemical analysis of paraffin-embedded human kidney tissue using (ABIN1537780 and ABIN2848638) performed on the Leica® BOND RXm. Samples were incubated with primary Antibody (1/500) for 1 hours at room temperature. A undiluted biotinylated CRF Anti-Polyvalent HRP Polymer antibody was used as the secondary antibody.



Western Blotting

Image 2. Anti-RAB28 Antibody (Center) at 1:1000 dilution + Human kidney lysate Lysates/proteins at 20 µg per lane. Secondary Goat Anti-Rabbit IgG, (H+L), Peroxidase conjugated at 1/10000 dilution. Predicted band size : 25 kDa Blocking/Dilution buffer: 5 % NFDm/TBST.



Western Blotting

Image 3. RAB28 Antibody (Center) (ABIN1537780 and ABIN2848638) western blot analysis in cell line lysates (35 µg/lane). This demonstrates the RAB28 antibody detected the RAB28 protein (arrow).

Please check the [product details page](#) for more images. Overall 4 images are available for ABIN1537780.