

Datasheet for ABIN1537781
anti-SCAMP2 antibody (AA 119-147)[Go to Product page](#)

1 Image

Overview

Quantity:	400 µL
Target:	SCAMP2
Binding Specificity:	AA 119-147
Reactivity:	Human
Host:	Rabbit
Clonality:	Polyclonal
Conjugate:	This SCAMP2 antibody is un-conjugated
Application:	Western Blotting (WB)

Product Details

Immunogen:	This SCAMP2 antibody is generated from rabbits immunized with a KLH conjugated synthetic peptide between 119-147 amino acids from the Central region of human SCAMP2.
Clone:	RB37174
Isotype:	Ig Fraction
Predicted Reactivity:	M
Purification:	This antibody is purified through a protein A column, followed by peptide affinity purification.

Target Details

Target:	SCAMP2
Alternative Name:	SCAMP2 (SCAMP2 Products)

Target Details

Background: This gene product belongs to the SCAMP family of proteins which are secretory carrier membrane proteins. They function as carriers to the cell surface in post-golgi recycling pathways. Different family members are highly related products of distinct genes, and are usually expressed together. These findings suggest that the SCAMPs may function at the same site during vesicular transport rather than in separate pathways.

Molecular Weight: 36649

Gene ID: 10066

NCBI Accession: [NP_005688](#)

UniProt: [O15127](#)

Application Details

Application Notes: WB: 1:1000

Restrictions: For Research Use only

Handling

Format: Liquid

Buffer: Purified polyclonal antibody supplied in PBS with 0.09 % (W/V) sodium azide.

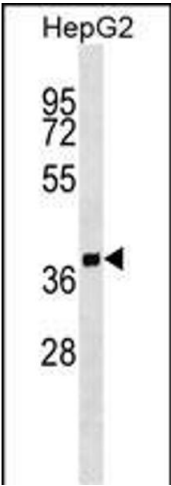
Preservative: Sodium azide

Precaution of Use: This product contains Sodium azide: a POISONOUS AND HAZARDOUS SUBSTANCE which should be handled by trained staff only.

Storage: 4 °C,-20 °C

Storage Comment: SCAMP2 Antibody (Center) can be refrigerated at 2-8 °C for up to 6 months. For long term storage, keep at -20 °C.

Expiry Date: 6 months



Western Blotting

Image 1. SCP2 Antibody (Center) (ABIN1537781 and ABIN2848952) western blot analysis in HepG2 cell line lysates (35 µg/lane). This demonstrates the SCP2 antibody detected the SCP2 protein (arrow).