

Datasheet for ABIN1537789
anti-GPR22 antibody (AA 122-148)[Go to Product page](#)

1 Image

Overview

Quantity:	400 µL
Target:	GPR22
Binding Specificity:	AA 122-148
Reactivity:	Human
Host:	Rabbit
Clonality:	Polyclonal
Conjugate:	This GPR22 antibody is un-conjugated
Application:	Western Blotting (WB)

Product Details

Immunogen:	This GPR22 antibody is generated from rabbits immunized with a KLH conjugated synthetic peptide between 122-148 amino acids from the Central region of human GPR22.
Clone:	RB37590
Isotype:	Ig Fraction
Predicted Reactivity:	M, Rat
Purification:	This antibody is purified through a protein A column, followed by peptide affinity purification.

Target Details

Target:	GPR22
Alternative Name:	GPR22 (GPR22 Products)

Target Details

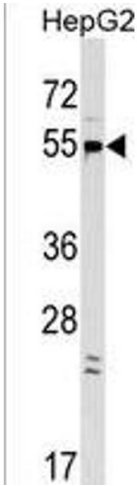
Background:	This gene is a member of the G-protein coupled receptor 1 family and encodes a multi-pass membrane protein. [provided by RefSeq].
Molecular Weight:	49265
Gene ID:	2845
NCBI Accession:	NP_005286
UniProt:	Q99680

Application Details

Application Notes:	WB: 1:1000
Restrictions:	For Research Use only

Handling

Format:	Liquid
Buffer:	Purified polyclonal antibody supplied in PBS with 0.09 % (W/V) sodium azide.
Preservative:	Sodium azide
Precaution of Use:	This product contains Sodium azide: a POISONOUS AND HAZARDOUS SUBSTANCE which should be handled by trained staff only.
Storage:	4 °C,-20 °C
Storage Comment:	GPR22 Antibody (Center) can be refrigerated at 2-8 °C for up to 6 months. For long term storage, keep at -20 °C.
Expiry Date:	6 months



Western Blotting

Image 1. GPR22 Antibody (Center) (ABIN1537789 and ABIN2849173) western blot analysis in HepG2 cell line lysates (35 µg/lane). This demonstrates the GPR22 antibody detected the GPR22 protein (arrow).