



[Go to Product page](#)

Datasheet for ABIN1537790
anti-IER5 antibody (AA 122-149)

1 Image

Overview

Quantity:	400 µL
Target:	IER5
Binding Specificity:	AA 122-149
Reactivity:	Human
Host:	Rabbit
Clonality:	Polyclonal
Conjugate:	This IER5 antibody is un-conjugated
Application:	Western Blotting (WB)

Product Details

Immunogen:	This IER5 antibody is generated from rabbits immunized with a KLH conjugated synthetic peptide between 122-149 amino acids from the Central region of human IER5.
Clone:	RB37262
Isotype:	Ig Fraction
Purification:	This antibody is purified through a protein A column, followed by peptide affinity purification.

Target Details

Target:	IER5
Alternative Name:	IER5 (IER5 Products)
Background:	This gene encodes a protein that is similar to other immediate early response proteins. In the

Target Details

mouse, a similar gene may play an important role in mediating the cellular response to mitogenic signals. Studies in rats found the expression of a similar gene to be increased after waking and sleep deprivation.

Molecular Weight: 33704

Gene ID: 51278

NCBI Accession: [NP_057629](#)

UniProt: [Q5VY09](#)

Application Details

Application Notes: WB: 1:1000

Restrictions: For Research Use only

Handling

Format: Liquid

Buffer: Purified polyclonal antibody supplied in PBS with 0.09 % (W/V) sodium azide.

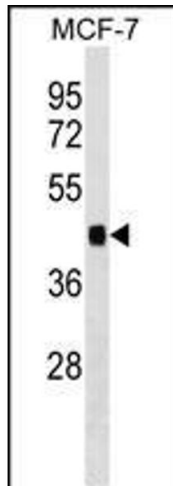
Preservative: Sodium azide

Precaution of Use: This product contains Sodium azide: a POISONOUS AND HAZARDOUS SUBSTANCE which should be handled by trained staff only.

Storage: 4 °C, -20 °C

Storage Comment: IER5 Antibody (Center) can be refrigerated at 2-8 °C for up to 6 months. For long term storage, keep at -20 °C.

Expiry Date: 6 months



Western Blotting

Image 1. IER5 Antibody (Center) (ABIN1537790 and ABIN2848977) western blot analysis in MCF-7 cell line lysates (35 μ g/lane). This demonstrates the IER5 antibody detected the IER5 protein (arrow).