



[Go to Product page](#)

Datasheet for ABIN1537792
anti-WDR61 antibody (AA 122-149)

1 Image

Overview

Quantity:	400 µL
Target:	WDR61
Binding Specificity:	AA 122-149
Reactivity:	Human
Host:	Rabbit
Clonality:	Polyclonal
Conjugate:	This WDR61 antibody is un-conjugated
Application:	Western Blotting (WB)

Product Details

Immunogen:	This WDR61 antibody is generated from rabbits immunized with a KLH conjugated synthetic peptide between 122-149 amino acids from the Central region of human WDR61.
Clone:	RB38379
Isotype:	Ig Fraction
Predicted Reactivity:	B, M, Rat
Purification:	This antibody is purified through a protein A column, followed by peptide affinity purification.

Target Details

Target:	WDR61
Alternative Name:	WDR61 (WDR61 Products)

Target Details

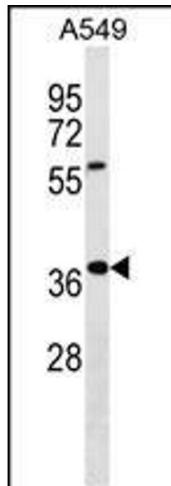
Background:	WDR61 is a subunit of the human PAF and SKI complexes, which function in transcriptional regulation and are involved in events downstream of RNA synthesis, such as RNA surveillance (Zhu et al., 2005 [PubMed 16024656]).
Gene ID:	80349
NCBI Accession:	NP_079510
UniProt:	Q9GZS3

Application Details

Application Notes:	WB: 1:1000
Restrictions:	For Research Use only

Handling

Format:	Liquid
Buffer:	Purified polyclonal antibody supplied in PBS with 0.09 % (W/V) sodium azide.
Preservative:	Sodium azide
Precaution of Use:	This product contains Sodium azide: a POISONOUS AND HAZARDOUS SUBSTANCE which should be handled by trained staff only.
Storage:	4 °C,-20 °C
Storage Comment:	WDR61 Antibody (Center) can be refrigerated at 2-8 °C for up to 6 months. For long term storage, keep at -20 °C.
Expiry Date:	6 months



Western Blotting

Image 1. WDR61 Antibody (Center) (ABIN1537792 and ABIN2849796) western blot analysis in A549 cell line lysates (35 µg/lane). This demonstrates the WDR61 antibody detected the WDR61 protein (arrow).