

Datasheet for ABIN1537795
anti-MIXL1 antibody (AA 122-151)[Go to Product page](#)

1 Image

Overview

Quantity:	400 µL
Target:	MIXL1
Binding Specificity:	AA 122-151
Reactivity:	Mouse
Host:	Rabbit
Clonality:	Polyclonal
Conjugate:	This MIXL1 antibody is un-conjugated
Application:	Western Blotting (WB)

Product Details

Immunogen:	This MIXL1 antibody is generated from rabbits immunized with a KLH conjugated synthetic peptide between 122-151 amino acids from the Central region of human MIXL1.
Clone:	RB39333
Isotype:	Ig Fraction
Purification:	This antibody is purified through a protein A column, followed by peptide affinity purification.

Target Details

Target:	MIXL1
Alternative Name:	MIXL1 (MIXL1 Products)
Background:	Homeodomain proteins, such as MIXL1, are transcription factors that regulate cell fate during

Target Details

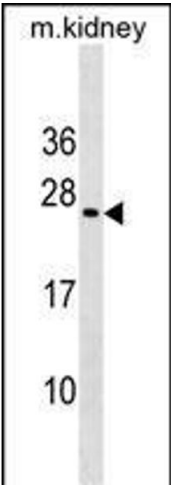
	development (Hart et al., 2005 [PubMed 15982639]).
Molecular Weight:	24659
Gene ID:	83881
NCBI Accession:	NP_114150
UniProt:	Q9H2W2

Application Details

Application Notes:	WB: 1:1000
Restrictions:	For Research Use only

Handling

Format:	Liquid
Buffer:	Purified polyclonal antibody supplied in PBS with 0.09 % (W/V) sodium azide.
Preservative:	Sodium azide
Precaution of Use:	This product contains Sodium azide: a POISONOUS AND HAZARDOUS SUBSTANCE which should be handled by trained staff only.
Storage:	4 °C,-20 °C
Storage Comment:	MIXL1 Antibody (Center) can be refrigerated at 2-8 °C for up to 6 months. For long term storage, keep at -20 °C.
Expiry Date:	6 months



Western Blotting

Image 1. MIXL1 Antibody (Center) (ABIN1537795 and ABIN2838285) western blot analysis in mouse kidney tissue lysates (35 µg/lane). This demonstrates the MIXL1 antibody detected the MIXL1 protein (arrow).