



[Go to Product page](#)

Datasheet for ABIN1537796  
**anti-PANX1 antibody (AA 124-152)**

1 Image

Overview

Quantity:	400 µL
Target:	PANX1
Binding Specificity:	AA 124-152
Reactivity:	Human
Host:	Rabbit
Clonality:	Polyclonal
Conjugate:	This PANX1 antibody is un-conjugated
Application:	Western Blotting (WB)

Product Details

Immunogen:	This PANX1 antibody is generated from rabbits immunized with a KLH conjugated synthetic peptide between 124-152 amino acids from the Central region of human PANX1.
Clone:	RB37088
Isotype:	Ig Fraction
Predicted Reactivity:	M, Rat
Purification:	This antibody is purified through a protein A column, followed by peptide affinity purification.

Target Details

Target:	PANX1
Alternative Name:	PANX1 ( <a href="#">PANX1 Products</a> )

## Target Details

---

**Background:** The protein encoded by this gene belongs to the innexin family. Innexin family members are the structural components of gap junctions. This protein and pannexin 2 are abundantly expressed in central nerve system (CNS) and are coexpressed in various neuronal populations. Studies in *Xenopus* oocytes suggest that this protein alone and in combination with pannexin 2 may form cell type-specific gap junctions with distinct properties. [provided by RefSeq].

**Molecular Weight:** 48050

**Gene ID:** 24145

**NCBI Accession:** [NP\\_056183](#)

**UniProt:** [Q96RD7](#)

## Application Details

---

**Application Notes:** WB: 1:1000

**Restrictions:** For Research Use only

## Handling

---

**Format:** Liquid

**Buffer:** Purified polyclonal antibody supplied in PBS with 0.09 % (W/V) sodium azide.

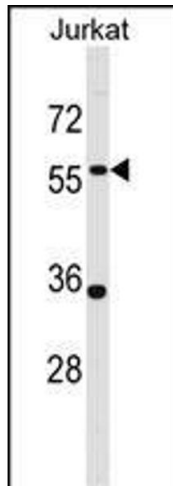
**Preservative:** Sodium azide

**Precaution of Use:** This product contains Sodium azide: a POISONOUS AND HAZARDOUS SUBSTANCE which should be handled by trained staff only.

**Storage:** 4 °C,-20 °C

**Storage Comment:** PANX1 Antibody (Center) can be refrigerated at 2-8 °C for up to 6 months. For long term storage, keep at -20 °C.

**Expiry Date:** 6 months



### Western Blotting

**Image 1.** NX1 Antibody (Center) (ABIN1537796 and ABIN2848757) western blot analysis in Jurkat cell line lysates (35 µg/lane). This demonstrates the NX1 antibody detected the NX1 protein (arrow).