

Datasheet for ABIN1537804
anti-CLEC4D antibody (AA 126-153)[Go to Product page](#)

1 Image

Overview

Quantity:	400 µL
Target:	CLEC4D
Binding Specificity:	AA 126-153
Reactivity:	Human
Host:	Rabbit
Clonality:	Polyclonal
Conjugate:	This CLEC4D antibody is un-conjugated
Application:	Western Blotting (WB)

Product Details

Immunogen:	This CLEC4D antibody is generated from rabbits immunized with a KLH conjugated synthetic peptide between 126-153 amino acids from the Central region of human CLEC4D.
Clone:	RB37841
Isotype:	Ig Fraction
Purification:	This antibody is purified through a protein A column, followed by peptide affinity purification.

Target Details

Target:	CLEC4D
Alternative Name:	CLEC4D (CLEC4D Products)
Background:	This gene encodes a member of the C-type lectin/C-type lectin-like domain (CTL/CTLD)

Target Details

superfamily. Members of this family share a common protein fold and have diverse functions, such as cell adhesion, cell-cell signalling, glycoprotein turnover, and roles in inflammation and immune response. This gene is closely linked to other CTL/CTLD superfamily members on chromosome 12p13 in the natural killer gene complex region.

Molecular Weight: 24704

Gene ID: 338339

NCBI Accession: [NP_525126](#)

UniProt: [Q8WXI8](#)

Application Details

Application Notes: WB: 1:1000

Restrictions: For Research Use only

Handling

Format: Liquid

Buffer: Purified polyclonal antibody supplied in PBS with 0.09 % (W/V) sodium azide.

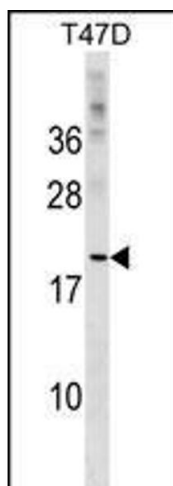
Preservative: Sodium azide

Precaution of Use: This product contains Sodium azide: a POISONOUS AND HAZARDOUS SUBSTANCE which should be handled by trained staff only.

Storage: 4 °C, -20 °C

Storage Comment: CLEC4D Antibody (Center) can be refrigerated at 2-8 °C for up to 6 months. For long term storage, keep at -20 °C.

Expiry Date: 6 months



Western Blotting

Image 1. CLEC4D Antibody (Center) (ABIN1537804 and ABIN2849117) western blot analysis in T47D cell line lysates (35 µg/lane). This demonstrates the CLEC4D antibody detected the CLEC4D protein (arrow).