

Datasheet for ABIN1537808
anti-HLA-DMB antibody (AA 127-154)[Go to Product page](#)

1 Image

Overview

Quantity:	400 µL
Target:	HLA-DMB
Binding Specificity:	AA 127-154
Reactivity:	Human
Host:	Rabbit
Clonality:	Polyclonal
Conjugate:	This HLA-DMB antibody is un-conjugated
Application:	Western Blotting (WB)

Product Details

Immunogen:	This HLA-DMB antibody is generated from rabbits immunized with a KLH conjugated synthetic peptide between 127-154 amino acids from the Central region of human HLA-DMB.
Clone:	RB31771
Isotype:	Ig Fraction
Purification:	This antibody is purified through a protein A column, followed by peptide affinity purification.

Target Details

Target:	HLA-DMB
Alternative Name:	HLA-DMB (HLA-DMB Products)
Background:	HLA-DMB belongs to the HLA class II beta chain paralogues. This class II molecule is a

Target Details

heterodimer consisting of an alpha (DMA) and a beta (DMB) chain, both anchored in the membrane. It is located in intracellular vesicles. DM plays a central role in the peptide loading of MHC class II molecules by helping to release the CLIP (class II-associated invariant chain peptide) molecule from the peptide binding site. Class II molecules are expressed in antigen presenting cells (APC: B lymphocytes, dendritic cells, macrophages). The beta chain is approximately 26-28 kDa and its gene contains 6 exons. Exon one encodes the leader peptide, exons 2 and 3 encode the two extracellular domains, exon 4 encodes the transmembrane domain and exon 5 encodes the cytoplasmic tail.

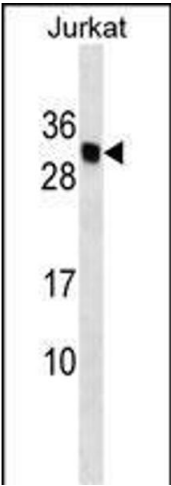
Molecular Weight:	28943
Gene ID:	3109
NCBI Accession:	NP_002109
UniProt:	P28068
Pathways:	Cancer Immune Checkpoints , Human Leukocyte Antigen (HLA) in Adaptive Immune Response

Application Details

Application Notes:	WB: 1:1000
Restrictions:	For Research Use only

Handling

Format:	Liquid
Buffer:	Purified polyclonal antibody supplied in PBS with 0.09 % (W/V) sodium azide.
Preservative:	Sodium azide
Precaution of Use:	This product contains Sodium azide: a POISONOUS AND HAZARDOUS SUBSTANCE which should be handled by trained staff only.
Storage:	4 °C, -20 °C
Storage Comment:	HLA-DMB Antibody (Center) can be refrigerated at 2-8 °C for up to 6 months. For long term storage, keep at -20 °C.
Expiry Date:	6 months



Western Blotting

Image 1. HLA-DMB Antibody (Center) (ABIN1537808 and ABIN2849547) western blot analysis in Jurkat cell line lysates (35 µg/lane). This demonstrates the HLA-DMB antibody detected the HLA-DMB protein (arrow).