

Datasheet for ABIN1537809
anti-Myotilin antibody (AA 127-155)[Go to Product page](#)

1 Image

Overview

Quantity:	400 µL
Target:	Myotilin (MYOT)
Binding Specificity:	AA 127-155
Reactivity:	Human
Host:	Rabbit
Clonality:	Polyclonal
Conjugate:	This Myotilin antibody is un-conjugated
Application:	Western Blotting (WB)

Product Details

Immunogen:	This MYOT antibody is generated from rabbits immunized with a KLH conjugated synthetic peptide between 127-155 amino acids from the Central region of human MYOT.
Clone:	RB36975
Isotype:	Ig Fraction
Purification:	This antibody is purified through a protein A column, followed by peptide affinity purification.

Target Details

Target:	Myotilin (MYOT)
Alternative Name:	MYOT (MYOT Products)
Background:	This gene encodes a cytoskeletal protein which plays a significant role in the stability of thin

Target Details

filaments during muscle contraction. This protein binds F-actin, crosslinks actin filaments, and prevents latrunculin A-induced filament disassembly. Mutations in this gene have been associated with limb-girdle muscular dystrophy and myofibrillar myopathies. Several alternatively spliced transcript variants of this gene have been described, but the full-length nature of some of these variants has not been determined.

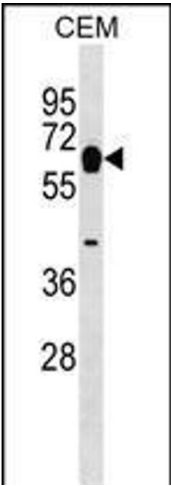
Molecular Weight:	55395
Gene ID:	9499
NCBI Accession:	NP_001129412 , NP_006781
UniProt:	Q9UBF9

Application Details

Application Notes:	WB: 1:1000
Restrictions:	For Research Use only

Handling

Format:	Liquid
Buffer:	Purified polyclonal antibody supplied in PBS with 0.09 % (W/V) sodium azide.
Preservative:	Sodium azide
Precaution of Use:	This product contains Sodium azide: a POISONOUS AND HAZARDOUS SUBSTANCE which should be handled by trained staff only.
Storage:	4 °C,-20 °C
Storage Comment:	MYOT Antibody (Center) can be refrigerated at 2-8 °C for up to 6 months. For long term storage, keep at -20 °C.
Expiry Date:	6 months



Western Blotting

Image 1. MYOT Antibody (Center) (ABIN1537809 and ABIN2848870) western blot analysis in CEM cell line lysates (35 µg/lane). This demonstrates the MYOT antibody detected the MYOT protein (arrow).