

Datasheet for ABIN1537810  
**anti-Lbx1 antibody (AA 127-155)**[Go to Product page](#)

## 1 Image

## Overview

Quantity:	400 µL
Target:	Lbx1
Binding Specificity:	AA 127-155
Reactivity:	Human, Mouse
Host:	Rabbit
Clonality:	Polyclonal
Conjugate:	This Lbx1 antibody is un-conjugated
Application:	Western Blotting (WB)

## Product Details

Immunogen:	This LBX1 antibody is generated from rabbits immunized with a KLH conjugated synthetic peptide between 127-155 amino acids from the Central region of human LBX1.
Clone:	RB37705
Isotype:	Ig Fraction
Predicted Reactivity:	Rat, X
Purification:	This antibody is purified through a protein A column, followed by peptide affinity purification.

## Target Details

Target:	Lbx1
Alternative Name:	LBX1 ( <a href="#">Lbx1 Products</a> )

## Target Details

**Background:** This gene and the orthologous mouse gene were found by their homology to the Drosophila lady bird early and late homeobox genes. In the mouse, this gene is a key regulator of muscle precursor cell migration and is required for the acquisition of dorsal identities of forelimb muscles.

**Gene ID:** 10660

**NCBI Accession:** [NP\\_006553](#)

**UniProt:** [P52954](#)

## Application Details

**Application Notes:** WB: 1:1000

**Restrictions:** For Research Use only

## Handling

**Format:** Liquid

**Buffer:** Purified polyclonal antibody supplied in PBS with 0.09 % (W/V) sodium azide.

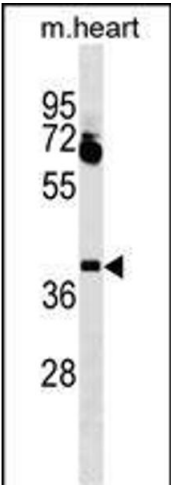
**Preservative:** Sodium azide

**Precaution of Use:** This product contains Sodium azide: a POISONOUS AND HAZARDOUS SUBSTANCE which should be handled by trained staff only.

**Storage:** 4 °C, -20 °C

**Storage Comment:** LBX1 Antibody (Center) can be refrigerated at 2-8 °C for up to 6 months. For long term storage, keep at -20 °C.

**Expiry Date:** 6 months



Western Blotting

**Image 1.** LBX1 Antibody (Center) (ABIN1537810 and ABIN2849739) western blot analysis in mouse heart tissue lysates (35 µg/lane). This demonstrates the LBX1 antibody detected the LBX1 protein (arrow).