

Datasheet for ABIN1537813
anti-TMEM178 antibody (AA 128-156)[Go to Product page](#)

1 Image

Overview

Quantity:	400 µL
Target:	TMEM178 (TMEM178A)
Binding Specificity:	AA 128-156
Reactivity:	Human, Mouse
Host:	Rabbit
Clonality:	Polyclonal
Conjugate:	This TMEM178 antibody is un-conjugated
Application:	Western Blotting (WB)

Product Details

Immunogen:	This TMEM178 antibody is generated from rabbits immunized with a KLH conjugated synthetic peptide between 128-156 amino acids from the Central region of human TMEM178.
Clone:	RB38035
Isotype:	Ig Fraction
Predicted Reactivity:	Zf, Rat
Purification:	This antibody is purified through a protein A column, followed by peptide affinity purification.

Target Details

Target:	TMEM178 (TMEM178A)
Alternative Name:	TMEM178 (TMEM178A Products)

Target Details

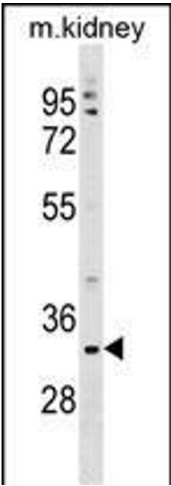
Background:	The function of this protein remains unknown.
Molecular Weight:	33019
Gene ID:	130733
NCBI Accession:	NP_001161431 , NP_689603
UniProt:	Q8NBL3

Application Details

Application Notes:	WB: 1:1000
Restrictions:	For Research Use only

Handling

Format:	Liquid
Buffer:	Purified polyclonal antibody supplied in PBS with 0.09 % (W/V) sodium azide.
Preservative:	Sodium azide
Precaution of Use:	This product contains Sodium azide: a POISONOUS AND HAZARDOUS SUBSTANCE which should be handled by trained staff only.
Storage:	4 °C, -20 °C
Storage Comment:	TMEM178 Antibody (Center) can be refrigerated at 2-8 °C for up to 6 months. For long term storage, keep at -20 °C.
Expiry Date:	6 months



Western Blotting

Image 1. TME Antibody (Center) (ABIN1537813 and ABIN2849446) western blot analysis in mouse kidney tissue lysates (35 µg/lane). This demonstrates the TME antibody detected the TME protein (arrow).