

Datasheet for ABIN1537827  
**anti-EPDR1 antibody (AA 133-161)**[Go to Product page](#)

## 1 Image

## Overview

Quantity:	400 µL
Target:	EPDR1
Binding Specificity:	AA 133-161
Reactivity:	Human
Host:	Rabbit
Clonality:	Polyclonal
Conjugate:	This EPDR1 antibody is un-conjugated
Application:	Western Blotting (WB)

## Product Details

Immunogen:	This EPDR1 antibody is generated from rabbits immunized with a KLH conjugated synthetic peptide between 133-161 amino acids from the Central region of human EPDR1.
Clone:	RB37247
Isotype:	IgG
Predicted Reactivity:	B, Pr
Purification:	This antibody is purified through a protein A column, followed by peptide affinity purification.

## Target Details

Target:	EPDR1
Alternative Name:	EPDR1 ( <a href="#">EPDR1 Products</a> )

## Target Details

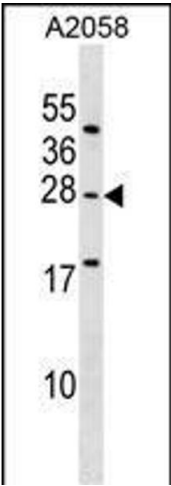
Background:	The protein encoded by this gene is a type II transmembrane protein and is similar to two families of cell adhesion molecules, the protocadherins and ependymins. This protein may play a role in calcium dependent cell adhesion. [provided by RefSeq].
Molecular Weight:	25437
Gene ID:	54749
NCBI Accession:	<a href="#">NP_001229875</a> , <a href="#">NP_001229877</a> , <a href="#">NP_060019</a>
UniProt:	<a href="#">Q9UM22</a>

## Application Details

Application Notes:	WB: 1:1000
Restrictions:	For Research Use only

## Handling

Format:	Liquid
Buffer:	Purified polyclonal antibody supplied in PBS with 0.09 % (W/V) sodium azide.
Preservative:	Sodium azide
Precaution of Use:	This product contains Sodium azide: a POISONOUS AND HAZARDOUS SUBSTANCE which should be handled by trained staff only.
Storage:	4 °C, -20 °C
Storage Comment:	EPDR1 Antibody (Center) can be refrigerated at 2-8 °C for up to 6 months. For long term storage, keep at -20 °C.
Expiry Date:	6 months



Western Blotting

**Image 1.** EPDR1 Antibody (Center) (ABIN1537827 and ABIN2848898) western blot analysis in cell line lysates (35 µg/lane). This demonstrates the EPDR1 antibody detected the EPDR1 protein (arrow).