



[Go to Product page](#)

Datasheet for ABIN1537828  
**anti-TMPPE antibody (AA 133-161)**

1 Image

Overview

Quantity:	400 µL
Target:	TMPPE
Binding Specificity:	AA 133-161
Reactivity:	Human
Host:	Rabbit
Clonality:	Polyclonal
Conjugate:	This TMPPE antibody is un-conjugated
Application:	Western Blotting (WB)

Product Details

Immunogen:	This TMPPE antibody is generated from rabbits immunized with a KLH conjugated synthetic peptide between 133-161 amino acids from the Central region of human TMPPE.
Clone:	RB40260
Isotype:	Ig Fraction
Purification:	This antibody is purified through a protein A column, followed by peptide affinity purification.

Target Details

Target:	TMPPE
Alternative Name:	TMPPE ( <a href="#">TMPPE Products</a> )
Background:	The function of this protein remains unknown.

## Target Details

Molecular Weight:	49453
Gene ID:	643853
NCBI Accession:	<a href="#">NP_001034859</a> , <a href="#">NP_001129710</a>
UniProt:	<a href="#">Q6ZT21</a>

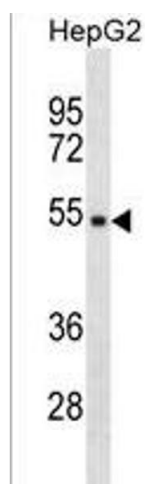
## Application Details

Application Notes:	WB: 1:1000
Restrictions:	For Research Use only

## Handling

Format:	Liquid
Buffer:	Purified polyclonal antibody supplied in PBS with 0.09 % (W/V) sodium azide.
Preservative:	Sodium azide
Precaution of Use:	This product contains Sodium azide: a POISONOUS AND HAZARDOUS SUBSTANCE which should be handled by trained staff only.
Storage:	4 °C, -20 °C
Storage Comment:	TMPPE Antibody (Center) can be refrigerated at 2-8 °C for up to 6 months. For long term storage, keep at -20 °C.
Expiry Date:	6 months

## Images



### Western Blotting

**Image 1.** TPE Antibody (Center) (ABIN1537828 and ABIN2838253) western blot analysis in HepG2 cell line lysates (35 µg/lane). This demonstrates the TPE antibody detected the TPE protein (arrow).