

Datasheet for ABIN1537833

anti-RG9MTD3 antibody (AA 135-162)[Go to Product page](#)**1** Image

Overview

Quantity:	400 µL
Target:	RG9MTD3
Binding Specificity:	AA 135-162
Reactivity:	Human
Host:	Rabbit
Clonality:	Polyclonal
Conjugate:	This RG9MTD3 antibody is un-conjugated
Application:	Western Blotting (WB)

Product Details

Immunogen:	This RG9MTD3 antibody is generated from rabbits immunized with a KLH conjugated synthetic peptide between 135-162 amino acids from the Central region of human RG9MTD3.
Clone:	RB37751
Isotype:	Ig Fraction
Predicted Reactivity:	B
Purification:	This antibody is purified through a protein A column, followed by peptide affinity purification.

Target Details

Target:	RG9MTD3
Alternative Name:	RG9MTD3 (RG9MTD3 Products)

Target Details

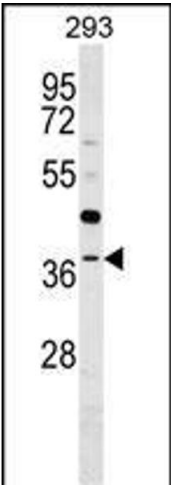
Background:	RG9MTD3 is probable RNA methyltransferase (By similarity).
Molecular Weight:	36124
Gene ID:	158234
NCBI Accession:	NP_659401
UniProt:	Q6PF06

Application Details

Application Notes:	WB: 1:1000
Restrictions:	For Research Use only

Handling

Format:	Liquid
Buffer:	Purified polyclonal antibody supplied in PBS with 0.09 % (W/V) sodium azide.
Preservative:	Sodium azide
Precaution of Use:	This product contains Sodium azide: a POISONOUS AND HAZARDOUS SUBSTANCE which should be handled by trained staff only.
Storage:	4 °C,-20 °C
Storage Comment:	RG9MTD3 Antibody (Center) can be refrigerated at 2-8 °C for up to 6 months. For long term storage, keep at -20 °C.
Expiry Date:	6 months



Western Blotting

Image 1. RG9MTD3 Antibody (Center) (ABIN1537833 and ABIN2849567) western blot analysis in 293 cell line lysates (35 µg/lane). This demonstrates the RG9MTD3 antibody detected the RG9MTD3 protein (arrow).