

Datasheet for ABIN1537837
anti-MS4A7 antibody (AA 137-164)[Go to Product page](#)

1 Image

Overview

Quantity:	400 µL
Target:	MS4A7
Binding Specificity:	AA 137-164
Reactivity:	Human
Host:	Rabbit
Clonality:	Polyclonal
Conjugate:	This MS4A7 antibody is un-conjugated
Application:	Western Blotting (WB)

Product Details

Immunogen:	This MS4A7 antibody is generated from rabbits immunized with a KLH conjugated synthetic peptide between 137-164 amino acids from the Central region of human MS4A7.
Clone:	RB36529
Isotype:	Ig Fraction
Purification:	This antibody is purified through a protein A column, followed by peptide affinity purification.

Target Details

Target:	MS4A7
Alternative Name:	MS4A7 (MS4A7 Products)
Background:	This gene encodes a member of the membrane-spanning 4A gene family, members of which

Target Details

are characterized by common structural features and similar intron/exon splice boundaries and display unique expression patterns in hematopoietic cells and nonlymphoid tissues. This family member is associated with mature cellular function in the monocytic lineage, and it may be a component of a receptor complex involved in signal transduction. This gene is localized to 11q12, in a cluster of other family members. At least four alternatively spliced transcript variants encoding two distinct isoforms have been observed. [provided by RefSeq].

Molecular Weight: 26131

Gene ID: 58475

NCBI Accession: [NP_067024](#), [NP_996821](#), [NP_996822](#), [NP_996823](#)

UniProt: [Q9GZW8](#)

Application Details

Application Notes: WB: 1:1000

Restrictions: For Research Use only

Handling

Format: Liquid

Buffer: Purified polyclonal antibody supplied in PBS with 0.09 % (W/V) sodium azide.

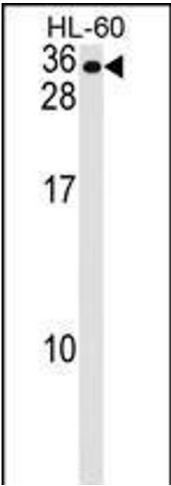
Preservative: Sodium azide

Precaution of Use: This product contains Sodium azide: a POISONOUS AND HAZARDOUS SUBSTANCE which should be handled by trained staff only.

Storage: 4 °C, -20 °C

Storage Comment: MS4A7 Antibody (Center) can be refrigerated at 2-8 °C for up to 6 months. For long term storage, keep at -20 °C.

Expiry Date: 6 months



Western Blotting

Image 1. MS4A7 Antibody (Center) (ABIN1537837 and ABIN2848607) western blot analysis in HL-60 cell line lysates (35 µg/lane). This demonstrates the MS4A7 antibody detected the MS4A7 protein (arrow).