



Datasheet for ABIN1537843  
**anti-CBX2 antibody (AA 137-166)**



[Go to Product page](#)

1 Image

### Overview

Quantity:	400 µL
Target:	CBX2
Binding Specificity:	AA 137-166
Reactivity:	Human, Mouse
Host:	Rabbit
Clonality:	Polyclonal
Conjugate:	This CBX2 antibody is un-conjugated
Application:	Western Blotting (WB)

### Product Details

Immunogen:	This CBX2 antibody is generated from rabbits immunized with a KLH conjugated synthetic peptide between 137-166 amino acids from the Central region of human CBX2.
Clone:	RB35885
Isotype:	Ig Fraction
Purification:	This antibody is purified through a protein A column, followed by peptide affinity purification.

### Target Details

Target:	CBX2
Alternative Name:	CBX2 ( <a href="#">CBX2 Products</a> )
Background:	This gene encodes a component of the polycomb multiprotein complex, which is required to

## Target Details

---

maintain the transcriptionally repressive state of many genes throughout development via chromatin remodeling and modification of histones. Disruption of this gene in mice results in male-to-female gonadal sex reversal. Mutations in this gene are also associated with gonadal dysgenesis in humans. Alternatively spliced transcript variants encoding different isoforms have been noted for this gene.

Molecular Weight:	56081
Gene ID:	84733
NCBI Accession:	<a href="#">NP_005180</a> , <a href="#">NP_116036</a>
UniProt:	<a href="#">Q14781</a>

## Application Details

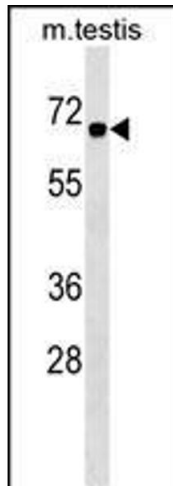
---

Application Notes:	WB: 1:1000
Restrictions:	For Research Use only

## Handling

---

Format:	Liquid
Buffer:	Purified polyclonal antibody supplied in PBS with 0.09 % (W/V) sodium azide.
Preservative:	Sodium azide
Precaution of Use:	This product contains Sodium azide: a POISONOUS AND HAZARDOUS SUBSTANCE which should be handled by trained staff only.
Storage:	4 °C,-20 °C
Storage Comment:	CBX2 Antibody (Center) can be refrigerated at 2-8 °C for up to 6 months. For long term storage, keep at -20 °C.
Expiry Date:	6 months



### Western Blotting

**Image 1.** CBX2 Antibody (Center) (ABIN1537843 and ABIN2848790) western blot analysis in mouse testis tissue lysates (35 µg/lane). This demonstrates the CBX2 antibody detected the CBX2 protein (arrow).