



[Go to Product page](#)

Datasheet for ABIN1537844  
**anti-CDS2 antibody (AA 138-165)**

1 Image

### Overview

Quantity:	400 µL
Target:	CDS2
Binding Specificity:	AA 138-165
Reactivity:	Human
Host:	Rabbit
Clonality:	Polyclonal
Conjugate:	This CDS2 antibody is un-conjugated
Application:	Western Blotting (WB)

### Product Details

Immunogen:	This CDS2 antibody is generated from rabbits immunized with a KLH conjugated synthetic peptide between 138-165 amino acids from the Central region of human CDS2.
Clone:	RB37301
Isotype:	Ig Fraction
Predicted Reactivity:	B, M, Rat
Purification:	This antibody is purified through a protein A column, followed by peptide affinity purification.

### Target Details

Target:	CDS2
Alternative Name:	CDS2 ( <a href="#">CDS2 Products</a> )

## Target Details

---

**Background:** Breakdown products of phosphoinositides are ubiquitous second messengers that function downstream of many G protein-coupled receptors and tyrosine kinases regulating cell growth, calcium metabolism, and protein kinase C activity. This gene encodes an enzyme which regulates the amount of phosphatidylinositol available for signaling by catalyzing the conversion of phosphatidic acid to CDP-diacylglycerol. This enzyme is an integral membrane protein localized to two subcellular domains, the matrix side of the inner mitochondrial membrane where it is thought to be involved in the synthesis of phosphatidylglycerol and cardiolipin and the cytoplasmic side of the endoplasmic reticulum where it functions in phosphatidylinositol biosynthesis. Two genes encoding this enzyme have been identified in humans, one mapping to human chromosome 4q21 and a second to 20p13.

---

**Molecular Weight:** 51418

---

**Gene ID:** 8760

---

**NCBI Accession:** [NP\\_003809](#)

---

**UniProt:** [O95674](#)

## Application Details

---

**Application Notes:** WB: 1:1000

---

**Restrictions:** For Research Use only

## Handling

---

**Format:** Liquid

---

**Buffer:** Purified polyclonal antibody supplied in PBS with 0.09 % (W/V) sodium azide.

---

**Preservative:** Sodium azide

---

**Precaution of Use:** This product contains Sodium azide: a POISONOUS AND HAZARDOUS SUBSTANCE which should be handled by trained staff only.

---

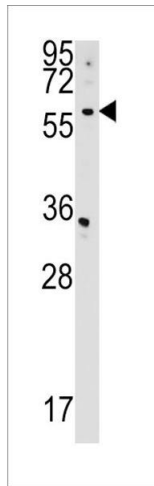
**Storage:** 4 °C, -20 °C

---

**Storage Comment:** CDS2 Antibody (Center) can be refrigerated at 2-8 °C for up to 6 months. For long term storage, keep at -20 °C.

---

**Expiry Date:** 6 months



### Western Blotting

**Image 1.** CDS2 Antibody (Center) (ABIN1537844 and ABIN2848780) western blot analysis in HepG2 cell line lysates (35 µg/lane). This demonstrates the CDS2 antibody detected the CDS2 protein (arrow).