

Datasheet for ABIN1537856  
**anti-KRT23 antibody (AA 141-170)**[Go to Product page](#)

## 1 Image

## Overview

Quantity:	400 µL
Target:	KRT23
Binding Specificity:	AA 141-170
Reactivity:	Human
Host:	Rabbit
Clonality:	Polyclonal
Conjugate:	This KRT23 antibody is un-conjugated
Application:	Western Blotting (WB)

## Product Details

Immunogen:	This KRT23 antibody is generated from rabbits immunized with a KLH conjugated synthetic peptide between 141-170 amino acids from the Central region of human KRT23.
Clone:	RB37208
Isotype:	Ig Fraction
Purification:	This antibody is purified through a protein A column, followed by peptide affinity purification.

## Target Details

Target:	KRT23
Alternative Name:	KRT23 ( <a href="#">KRT23 Products</a> )
Background:	The protein encoded by this gene is a member of the keratin family. The keratins are

## Target Details

intermediate filament proteins responsible for the structural integrity of epithelial cells and are subdivided into cytokeratins and hair keratins. The type I cytokeratins consist of acidic proteins which are arranged in pairs of heterotypic keratin chains. The type I cytokeratin genes are clustered in a region of chromosome 17q12-q21. [provided by RefSeq].

Molecular Weight: 48131

Gene ID: 25984

NCBI Accession: [NP\\_056330](#)

UniProt: [Q9C075](#)

## Application Details

Application Notes: WB: 1:1000

Restrictions: For Research Use only

## Handling

Format: Liquid

Buffer: Purified polyclonal antibody supplied in PBS with 0.09 % (W/V) sodium azide.

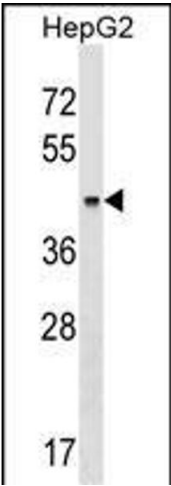
Preservative: Sodium azide

Precaution of Use: This product contains Sodium azide: a POISONOUS AND HAZARDOUS SUBSTANCE which should be handled by trained staff only.

Storage: 4 °C, -20 °C

Storage Comment: KRT23 Antibody (Center) can be refrigerated at 2-8 °C for up to 6 months. For long term storage, keep at -20 °C.

Expiry Date: 6 months



Western Blotting

**Image 1.** KRT23 Antibody (Center) (ABIN1537856 and ABIN2848964) western blot analysis in HepG2 cell line lysates (35 µg/lane). This demonstrates the KRT23 antibody detected the KRT23 protein (arrow).