

Datasheet for ABIN1537859
anti-LILRA6 antibody (AA 142-169)[Go to Product page](#)

1 Image

Overview

Quantity:	400 µL
Target:	LILRA6
Binding Specificity:	AA 142-169
Reactivity:	Human
Host:	Rabbit
Clonality:	Polyclonal
Conjugate:	This LILRA6 antibody is un-conjugated
Application:	Western Blotting (WB)

Product Details

Immunogen:	This LILRA6 antibody is generated from rabbits immunized with a KLH conjugated synthetic peptide between 142-169 amino acids from the Central region of human LILRA6.
Clone:	RB38876
Isotype:	Ig Fraction
Purification:	This antibody is purified through a protein A column, followed by peptide affinity purification.

Target Details

Target:	LILRA6
Alternative Name:	LILRA6 (LILRA6 Products)
Background:	LILRA6 may act as receptor for class I MHC antigens (By similarity).

Target Details

Molecular Weight: 52399

Gene ID: 79168

UniProt: [Q6PI73](#)

Application Details

Application Notes: WB: 1:1000

Restrictions: For Research Use only

Handling

Format: Liquid

Buffer: Purified polyclonal antibody supplied in PBS with 0.09 % (W/V) sodium azide.

Preservative: Sodium azide

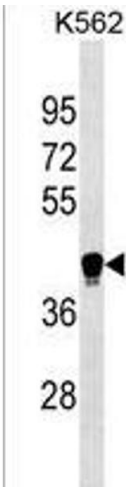
Precaution of Use: This product contains Sodium azide: a POISONOUS AND HAZARDOUS SUBSTANCE which should be handled by trained staff only.

Storage: 4 °C,-20 °C

Storage Comment: LILRA6 Antibody (Center) can be refrigerated at 2-8 °C for up to 6 months. For long term storage, keep at -20 °C.

Expiry Date: 6 months

Images



Western Blotting

Image 1. LILRA6 Antibody (Center) (ABIN1537859 and ABIN2838167) western blot analysis in K562 cell line lysates (35 µg/lane). This demonstrates the LILRA6 antibody detected the LILRA6 protein (arrow).